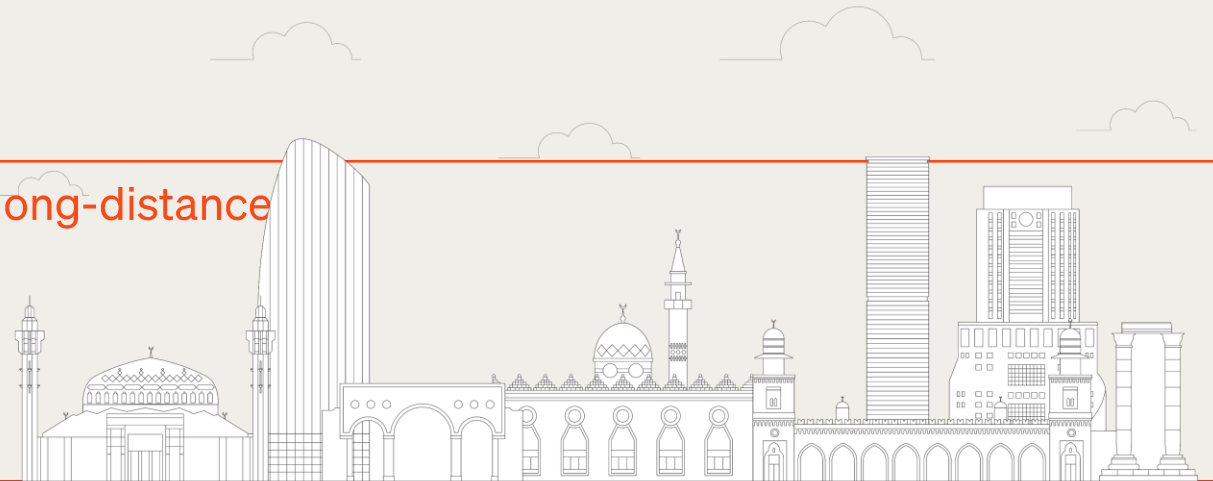


Work of the WOA *ad hoc* Group on the current workplan and revision of the Terrestrial Code chapters on animal transport

Maria Correia

Multi-regional Whole Journey Scenario workshop on long-distance transport by land and sea between Europe, the Middle East, and North Africa

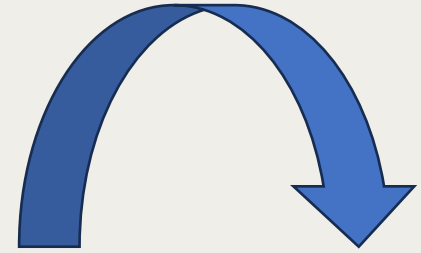
13- 15 January 2026, Amman, Jordan



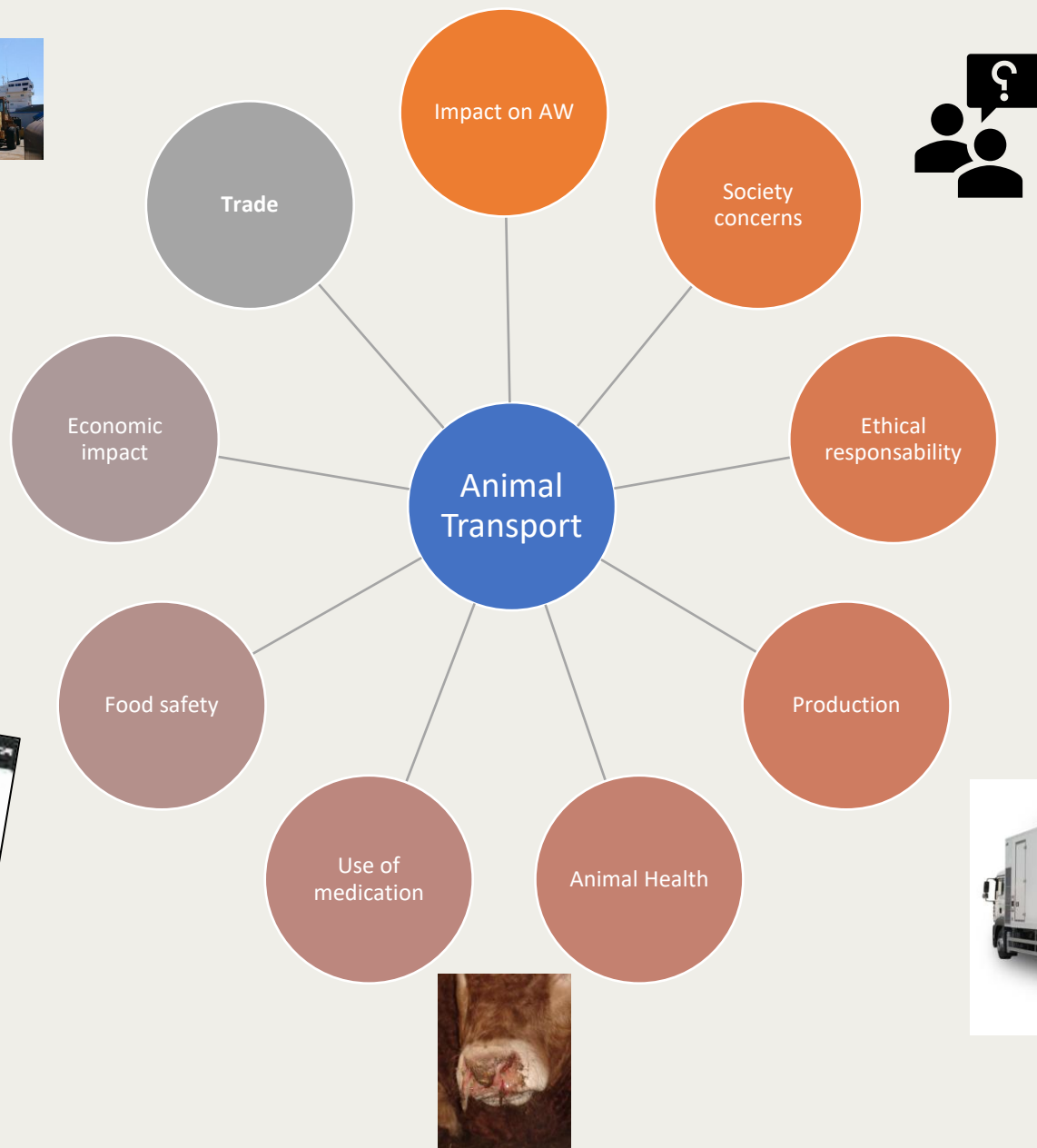
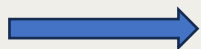
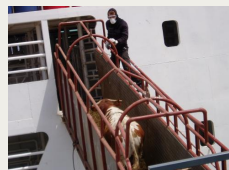
World Organisation
for Animal Health



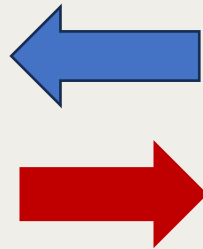
Transport of live animals is a **complex issue** with potential high **impact on animal welfare** and for which **societal concerns** are growing



Governments establish welfare measures



Animal transport and trade



Complex Operations

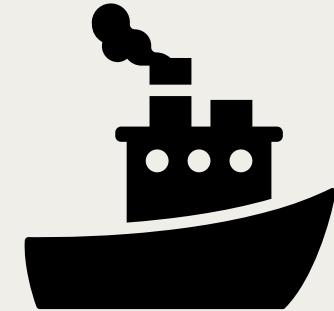
- Involves different stakeholders-transporters/exporters/importers/Farmers/organisers/CA
- Need a good planning and coordination
- **Communication between CA-Health and AW issues; Documentation**
- The importance of having good means of transports and personnel with competence as well as good management during the transport
- Contingency plans



ANIMAL TRANSPORT CHAPTERS IN TERRESTRIAL ANIMAL HEALTH CODE

SECTION 7- ANIMAL WELFARE

CHAPTER 7.2 - TRANSPORT OF ANIMALS BY SEA



CHAPTER 7.3.- TRANSPORT OF ANIMALS BY LAND



CHAPTER 7.4.- TRANSPORT OF ANIMALS BY AIR



WOAH standards on AW during transport play an important role on the improvement of AW during transport



**BASED ON THE
SCIENCE
KNOWLEDGE**



**GENERAL PRINCIPLES
AND SPECIFIC
REQUIREMENTS FOR
THE DIFERENTE
TYPES OF
TRANSPORT (ROAD,
SEA AND AIR
TRANSPORT)**



**DIFFERENT PHASES
OF TRANSPORT AND
THE MAIN CRITICAL
POINTS**



**HIGHLIGHT THE
SHARED
RESPONSABILITIES
OF THE DIFERENT
STAKEHOLDERS
INVOLVED**

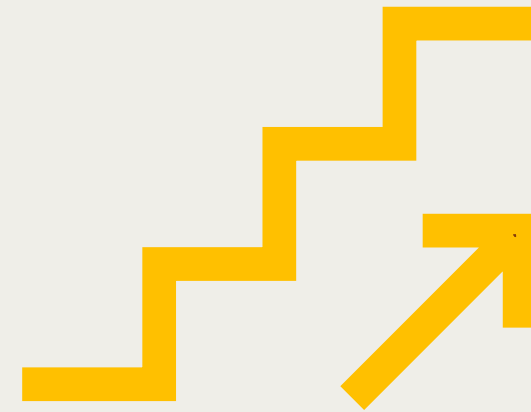


**DIFFERENT REALITIES
WORLD WIDE**



WOAH standards on AW during transport play an important role on the improvement of AW during transport

- ✓ Basis for the further actions at National level- enforcement of the codes- National regulatory framework or standards, guides of good practice ; development of training programs; etc
- ✓ Consideration to factors such as geographical situation, climatic, means of transport, type of production systems and species-specific requirements.
- ✓ **Relevance on the international trade of animals**
- ✓ Basis for networking/communication/cooperation among the WOAH members regarding animal transport



Gradual
improvement of the
AW during transport

The background image shows a close-up view of a ship's deck. A metal railing with horizontal bars and vertical posts is visible, secured with chains. Above the railing, a large, green, mesh-like net structure is suspended, possibly for fishing or cargo handling. The scene is brightly lit, with strong shadows cast across the deck and the net.

AW transport chapters revision

WOAH ad hoc Group on the revision of Chapter 7.2. and 7.3. Transport of animals by sea and land

- Maria Jorge CORREIA (chair)
- Laura LAPITZ
- Jennifer WOODS
- Aidan CAHILL
- Nikki KELLS
- Johannes Shoopala
- Stanislav RALCHEV
- Barbara Paladino
- Leopoldo Stuardo
- Meetings WOA
Headquarters/online- Paris



Different realities and expertises

AW on transport chapters revision

01

ITS A WORK IN
PROGRESS

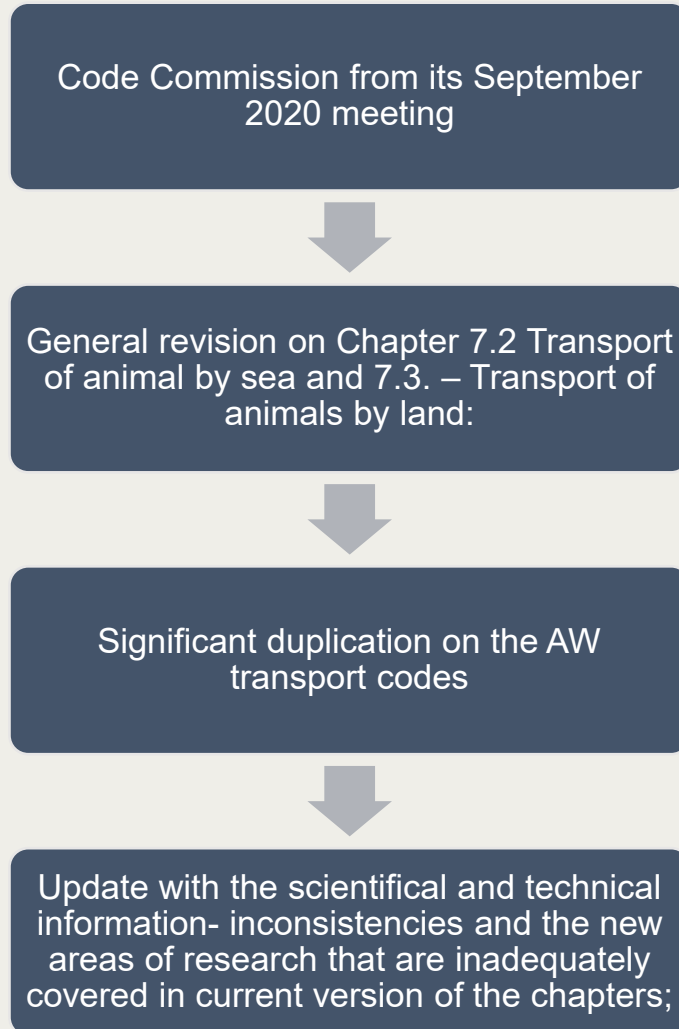
02

REVISED CHAPTER -
CODE COMMISSION
(FEBRUARY 2026
MEETING)

03

THE CODE COMMISSION
AND THE WOA
MEMBERS HAVE A VERY
IMPORTANT ROLE ON
THE PROGRESS OF THIS
WORK

Revision of the AW transport codes- TOR and objectives



WHY?

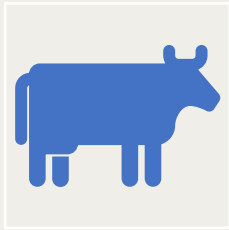
Proposal- to have **just one chapter** that includes the generalities of the animal transport and the specificities of each type of transport (road, water, air): Air transport- International Air Transport Association (IATA) recommendations

“Animal welfare during transport”

science based- references on the text



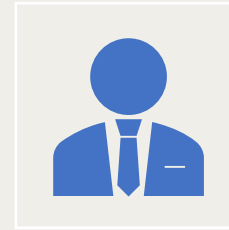
Revision of the AW transport chapter- TOR and objectives



To select criteria (**animal - based measures**) for the welfare of the animals during all the transport of animals by sea and land operations



Harmonize with other chapters



Cover the **responsibilities and competencies** of the personnel, business operators and the Competent Authorities

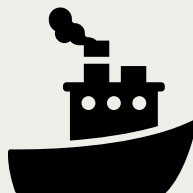


Recommendations on the **preparation regarding the transport** of animals by sea and land

- ✓ Follow a similar structure of the recently revised Chapter 7.5. 'Animal welfare during slaughter',
- ✓ including 'animal-based measures' to assess the welfare of animals during the whole transport operation; However, when necessary, include design or management-based measures.

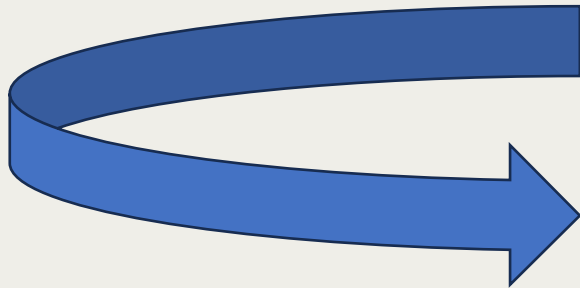
Revision of the AW on transport codes- TOR and objectives

- ✓ **Chronological order**, aligned with what could be considered during animal transport (operations).
- ✓ The recommendations should **cover the complete journey** (even if different means of transport are involved) of an animal
- ✓ be **easy for readers**



Scope

These recommendations apply to the following live domesticated animals: cattle, buffaloes, camels, sheep, goats, pigs, poultry and equines. They will also be largely applicable to some other animals, e.g. deer, other camelids and ratites. Wild animals and feral animals may need different conditions



Proposal

Transport by land, air, water and on foot

Context of commercial activity

Apply primarily to domesticated animals, but can also be applied in general to other species.

However, **wild and captive wild animals may need different conditions**- Additional information for the transport of these species can be found at the CITES guidelines for non-air transport (https://cites.org/sites/default/files/eng/resources/transport/transport_guidelines_2013-english.pdf).



New definitions- proposals

- ❖ Align with the current scientific and practical information of the entire transport process
- ❖ Include definitions for actors involved in the operations that are carried out during animal transport and the revision of some existent definitions on the glossary

Transport- means the planning, preparation, the *journey* itself, and the post-*journey* period.

Transporter- means any person or company transporting animals on their own account or on behalf of a third party.

Journey organiser-means the person(s) or company responsible for ensuring the planning and the necessary logistical arrangements for the entire journey are made in advance, including those necessary to safeguard the animals' welfare. This could be the role of the exporter or importer, the transporter, the freight forwarder, the owner of the animals, the keeper or the driver



er

Is the person that plans the journey- This is specially important in more complex journeys- exemples transports that involve sea and road transport

Can be the person that contracts the transporter(s)

The person in contact with the CA- have all the information

Can be the person in charge of the loading Operations- contractts the personnel

Should think about the contingencies and have a plan

Hazards for animal welfare during transport

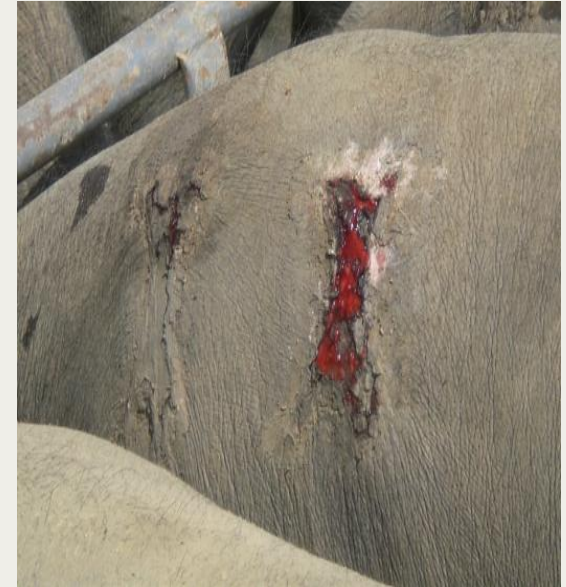
Similar structure of the recently adopted Chapter 7.5. Animal welfare during slaughter

Identify the main hazards, how to access them and the actions to minimise the impact of the hazards on the AW on transport



How to access the AW- measures

- To access the welfare of animals during transport- animal, resource and management-based measures.
- Preferred the Animal based measures
- Define the measures and the thresholds (science based)- adapted to the different conditions in which animals are transported.
- *Where to collect this data by the Competent Authority (Members)*
- Actions to be adopted





Training and competence of personnel

- key aspect of good animal welfare during transport.
- Training- formal training recognised by the CA; limited validity;
- Which subjects should be covered



Responsibilities for all involved in transport

!!!Each person involved on the transport should be aware of their own responsibilities

joint responsibility of all people involved,

- Journey organiser
- Farmer
- Animal handlers
- Manager of intermediary facilities
- Transporters
- Competent authorities



Contingency plans

- ✓ contingency plan **in place for every journey** (if they are repeated the same contingency plan with the update contacts)- all stakeholders involved
- ✓ Cover the **all journey**
- ✓ Very important in **most complex journeys**- example: journeys involving different types of transport
- ✓ Take in consideration the different hazards; type of transport, species, animal type, weather and the nature and duration of the journey
- ✓ Think about the actions to be taken in each possible situation
- ✓ Make the contingency plan aware of all the people involved



What can go wrong?

What actions should be taken?

Responsibilities

Who to contact?



At the sea ports/sea transport:

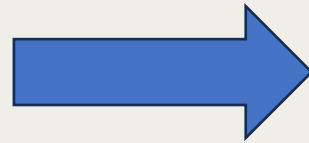
- escape of animals
- Unfit, ill or compromised animal
- Animals fall to the sea
- Delays due to bad weather and other unexpected situations
- Vessel Mechanical breakdown
- Vessel sinks
- Captain illness
- rejection of the consignment on arrival or at the border control post

e
x
a
m
p
l
e
s



Contingency situations- rejection of the consignment

Before the journey



confirmation of the acceptance of the consignment by the Competent Authorities at the destination.

AW should be a priority !!

Actions in case of rejections on arrival

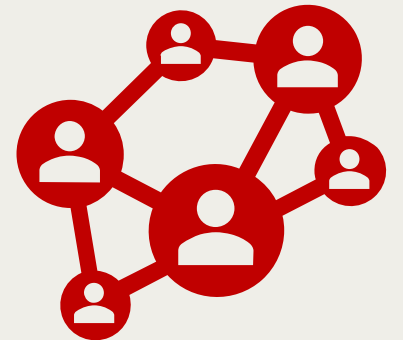


Some recommendations:

Communication between the CA (origin/destination) and with the importer/exporter to find a solution

Actions to guarantee the feeding, drinking and care of the animals (even in the means of transport)

Facilities to unload the animals (non sanitary reasons)



Planning the journey



appropriate means of transport to the species, categories and type of animals;

coordination of the different parts of the journey to prevent avoidable delays;

documentation to accompany the animals in accordance with the requirements of the transit and destination countries;

the selection of the best route, taking into account prevailing conditions and species-specific requirements;

the selection of the optimal weather conditions for the journey;

appropriate preparation of the animals for the journey;

appropriate loading and unloading facilities;

arrangements for bedding, resting, feeding and watering the animals during the journey as required;

competent personnel who will handle or drive the animals;

environmental conditions in the animal compartment during the journey;

contingency plan and emergency response plan;

sanitary measures to minimise the risk of transmissible disease.

Comprehensive planning is key to minimising the risk of injury or undue suffering during or after a *journey* [FAWAC, 2007].



Documentation

- Documentation plays an important role
- Allows the adequate planning and control of animal transport, especially in complex journeys
- The documentation required should be proportionate to the *animal welfare* risk.
- **Animals should not be loaded until the required documentation is complete.**



International transport-
veterinary health certificate

critical aspect that can
impact animal welfare if it
does not comply with the
requirements of the country
of destination.



Documentation

Examples:

- **journey plan**,
- **veterinary certification and sanitary requirements**, when required;
- **Costums documentation** when required
- **Number and animal identification**
- **Proof of competencies** of the personnel
- **the journey log** - daily record;
- Contingency plan



Technical articles:



- Introduction
- Animal welfare concerns
- Animal based or other measures
- Recommendations:
 - ✓ General
 - ✓ Specific- species specific/ means of transport



- Journey duration and requirements for water, feed and rest
- Fitness for transport
- Selection of compatible groups
- Handling
- Loading and unloading
- Environmental conditions.
- Space allowance
- Condition of the means of transport
- Intermediate facilities
- **Transport on foot (transhumance)**
- Actions in the event of a refusal to allow the completion of the journey on an international transport.



Transport on foot (transhumance)

In many parts of the world, animals are often moved on foot

- Hazards
- Animal based measures
- Recommendations:

Planning

Routs

Fit animals

Availability of feed, water and milking

Predators

Etc...





Other items

Include references to other documents once they are finalised:

- The emergency plan model,
- Model of a journey plan
- checklist model

A close-up photograph of a cow's face, focusing on its large, pinkish-brown nose and nostrils. The cow's fur is light brown and slightly textured. The background is dark and out of focus.

Thank you for
your
attention!!



mcorreia@dgav.pt