

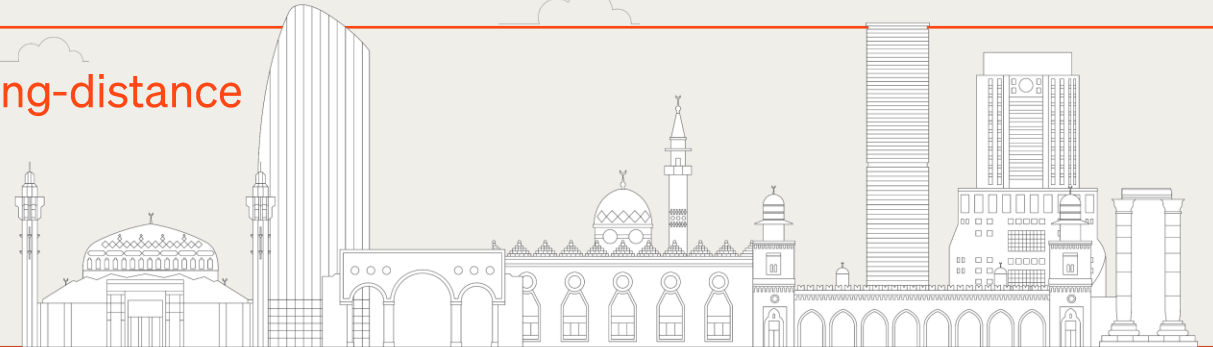
# URUGUAY

Speaker(s) name

Laura Lapitz

Multi-regional Whole Journey Scenario workshop on long-distance transport by land and sea between Europe, the Middle East, and North Africa

13- 15 January 2026, Amman, Jordan

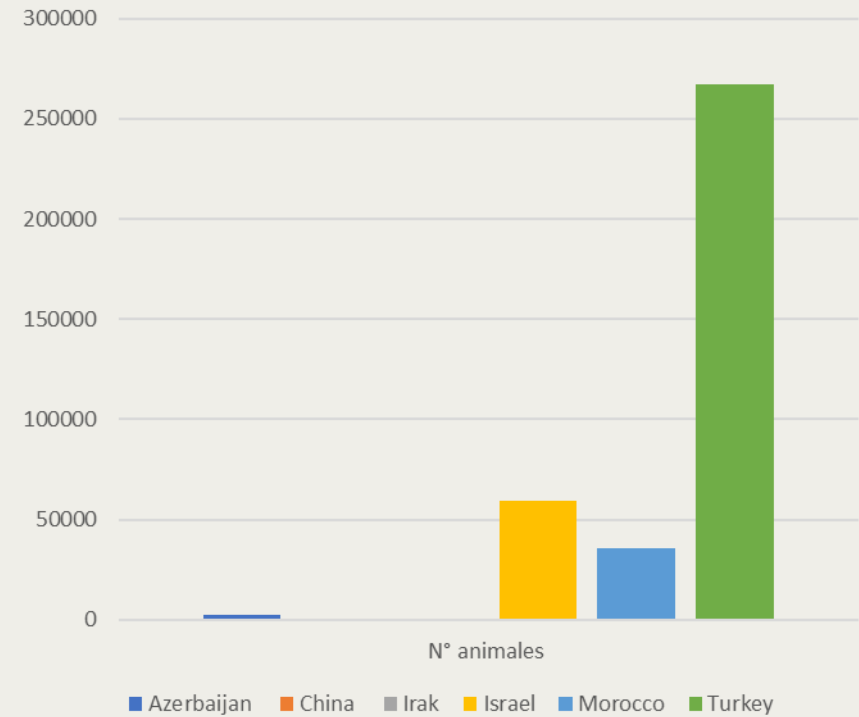


World Organisation  
for Animal Health

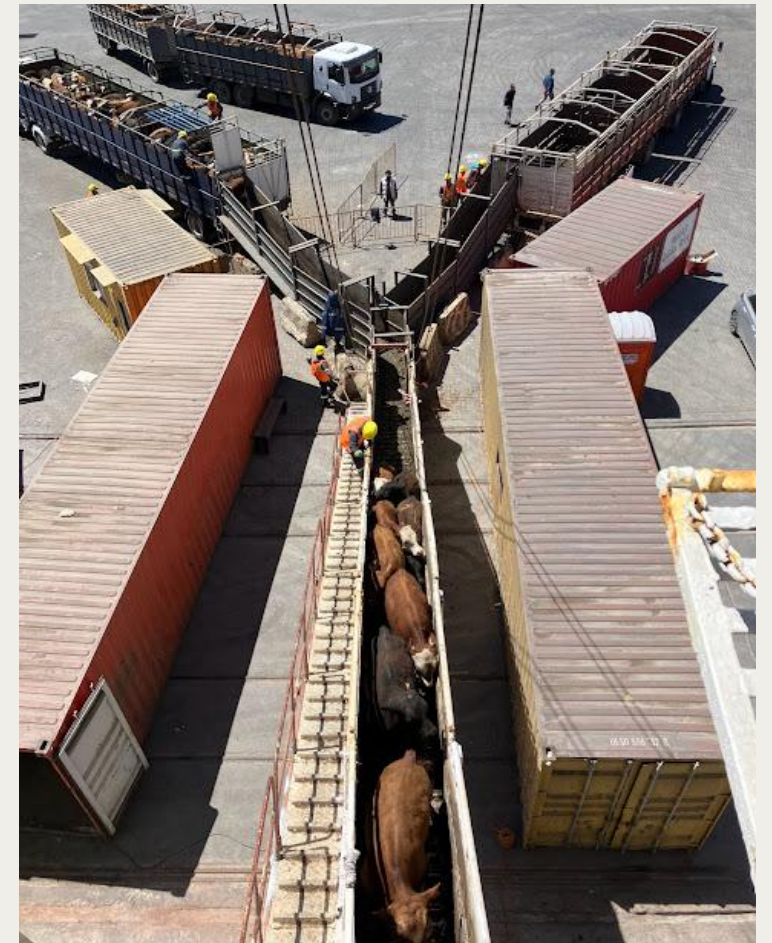
## Overview of country livestock transport and trade



**BOVINE EXPORT 2025: 365,426 heads**



# COMPETENT AUTHORITY (CA) RESPONSIBLE FOR AW: MINISTRY OF LIVESTOCK, AGRICULTURE AND FISHERIES - ANIMAL HEALTH DIVISION





## AW REQUIREMENTS, EXPORTERS HAVE TO COMPLY WITH:

QUARANTINE: MERCOSUR/GMC/Res. No. 21/24: *Conditions to be met by Animal Isolation Units for Export Quarantine and provisions for their operation. (Official Supervision)*

TRANSPORT BY SEA: Res. No. 041/2022: *Regulatory Standard on Health and Animal Welfare Requirements for the Qualification of Vessels for the Transport of Cattle, Sheep, and Goats, based on WOAHP Terrestrial Code, Chapter 7.2.*

# Competence Requirements for AW in Transport and Facilities

- Animal handlers: trained in daily care, quarantine management, loading/unloading, and emergency procedures.
- Exporters: responsible for journey planning, fitness for transport, provision of trained personnel, and post-journey reporting.
- Ship captains: responsible for adequate space, infrastructure, contingency planning, and animal welfare conditions on board.





CA establishes and enforces AW standards authorizing and controlling quarantine facilities, vehicles, vessels, and transport operations:

- Quarantine: Veterinary supervision animal health checks and AW (adequate space, feed, and water)
- Vessel Transport: Authorized vessel and suitable pens. Continuous water and feed. Ventilation, stocking density, and trained staff.





# Monitoring and evaluation



Before departure: Animals undergo official quarantine, (the IHC is previously agreed by the importing country).

- Animal health requirements and AW conditions are verified by CA.
- CA controls animals are fit for travel.

After the journey

- Post-journey reports required
- Analysis of animal welfare outcomes (mortality, morbidity, treatments, incidents)
- Corrective measures implemented when necessary.

## CONCLUSIONS:

Uruguay complies with  
WOAH standards for AW,  
BUT ...



### Main weaknesses:

- Reduced capacity of official personnel for supervision and inspections combined with increased numbers of exported animals, leading to system overload.
- Insufficient training in AW and transport handling for both OVS staff and operators.
- Limited official monitoring of AW during the journey by sea.
- Limited capacity to enforce responsibilities once vessels have departed from the Port of Montevideo.
- Need to strengthen services and tools to measure animal welfare, including the systematic use of animal-based measures (ABMs) and other welfare indicators.



# Thank you

---

Multi-regional Whole Journey Scenario workshop on long-distance transport  
by land and sea between Europe, the Middle East, and North Africa

13- 15 January 2026, Amman, Jordan

---



World Organisation  
for Animal Health