

SAT2 in Jordan



@FAO/Soufien Sghaier

SAT₂

Disease Situation

SAT₂

Iqbal qtananni
C.V.O

JCRAN

FMD Outbreak 2023

FMD / SAT2 was reported for the first time in the country in cattle farms (January 2023) in Aldulial /Khladia

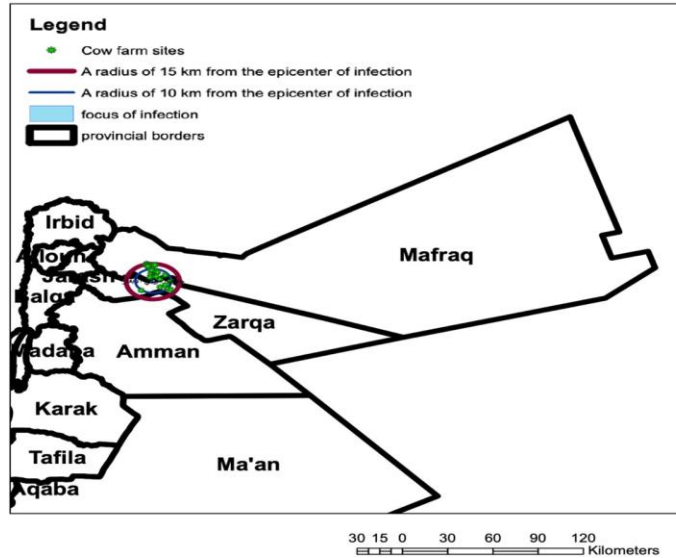
High morbidity and mortality rate cause a huge economic losses.

Gene Sequencing in the lab of veterinary college /JUST on February 2023

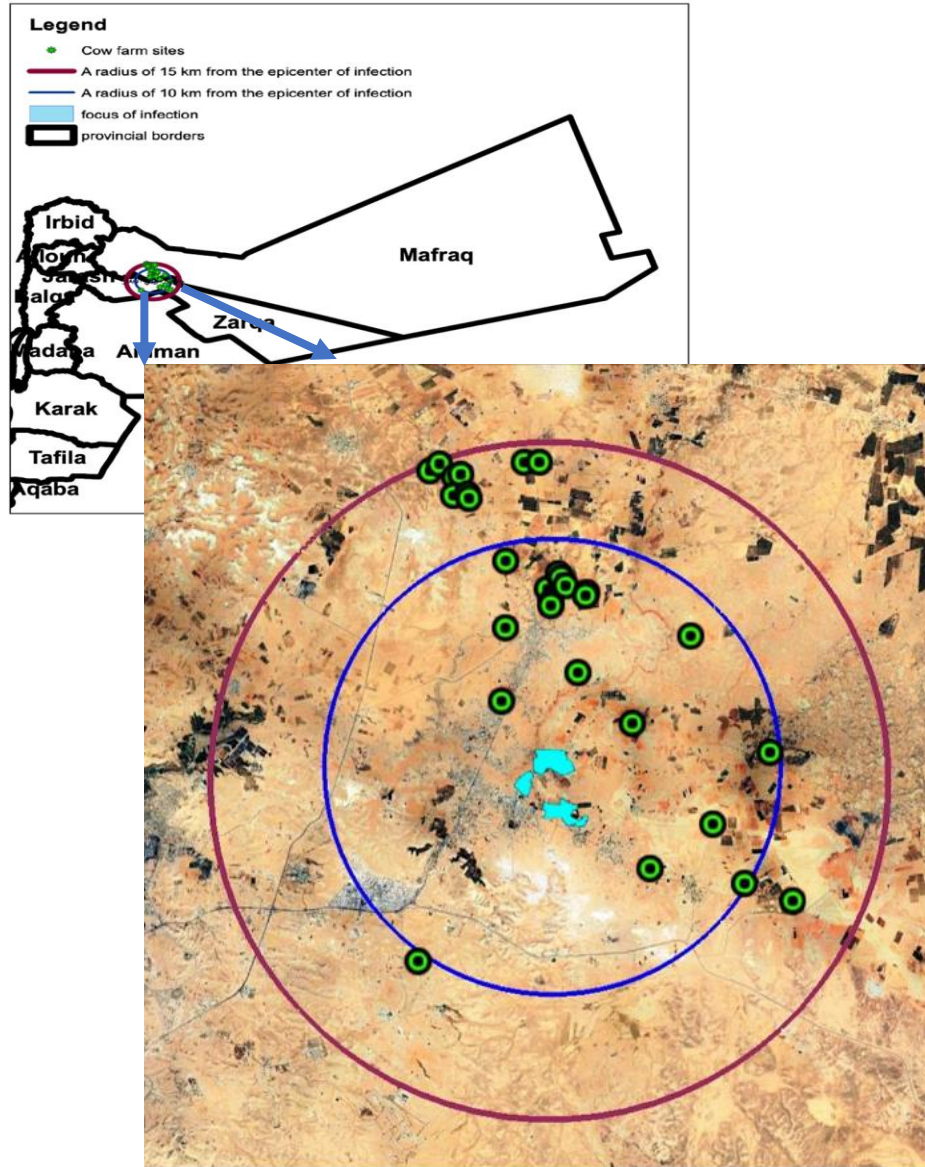
FMD SAT-2 was reported to WOA. The reported starting date is 26th January, 2023

JORDAN

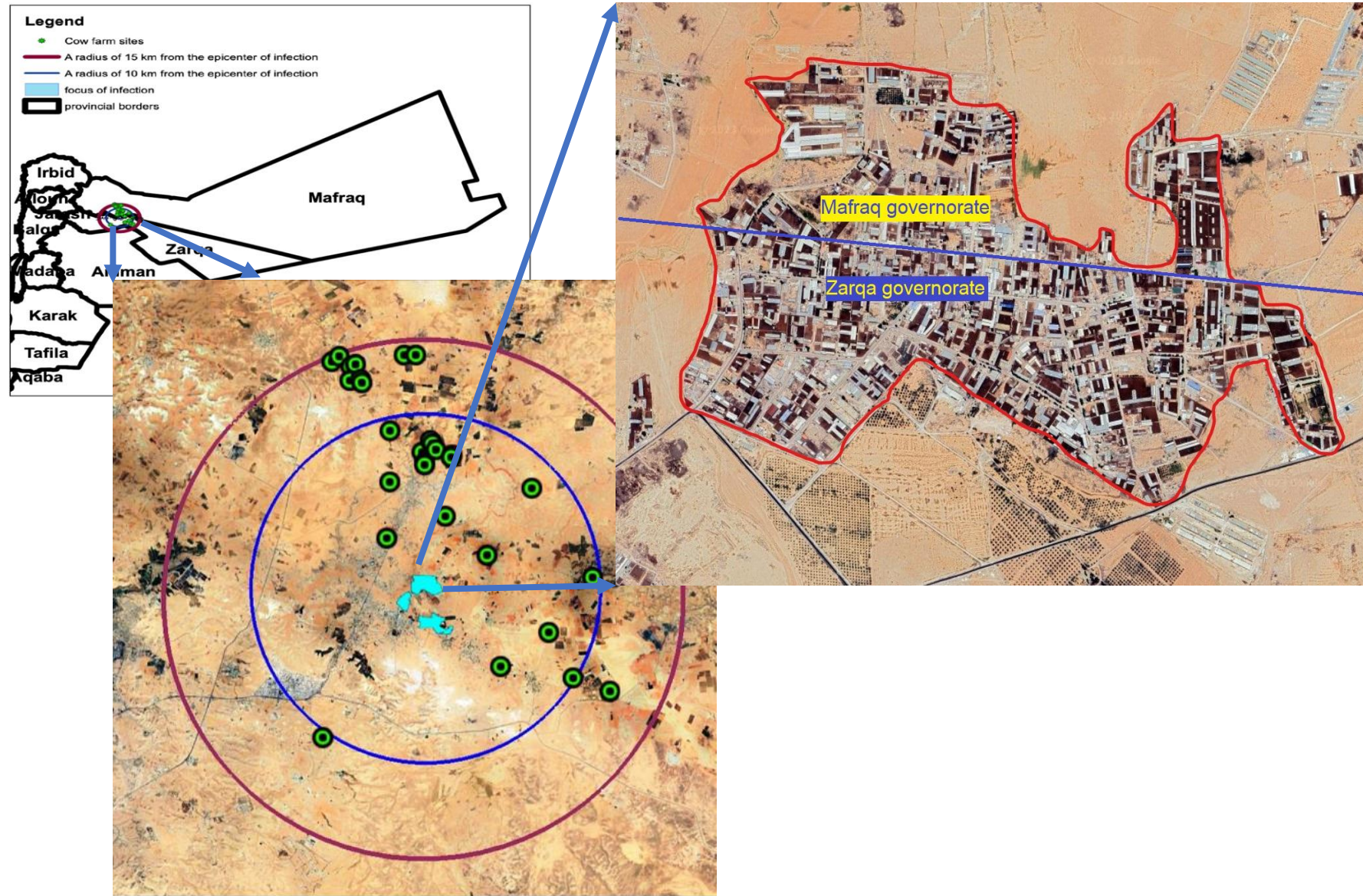
SAT2 in Jordan



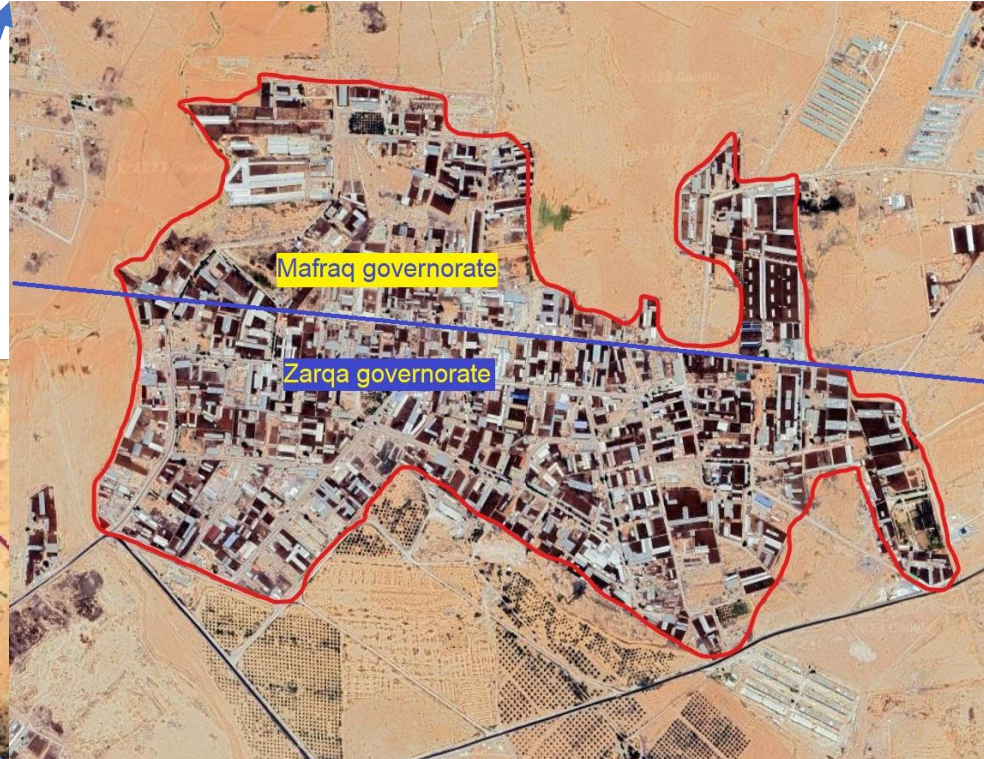
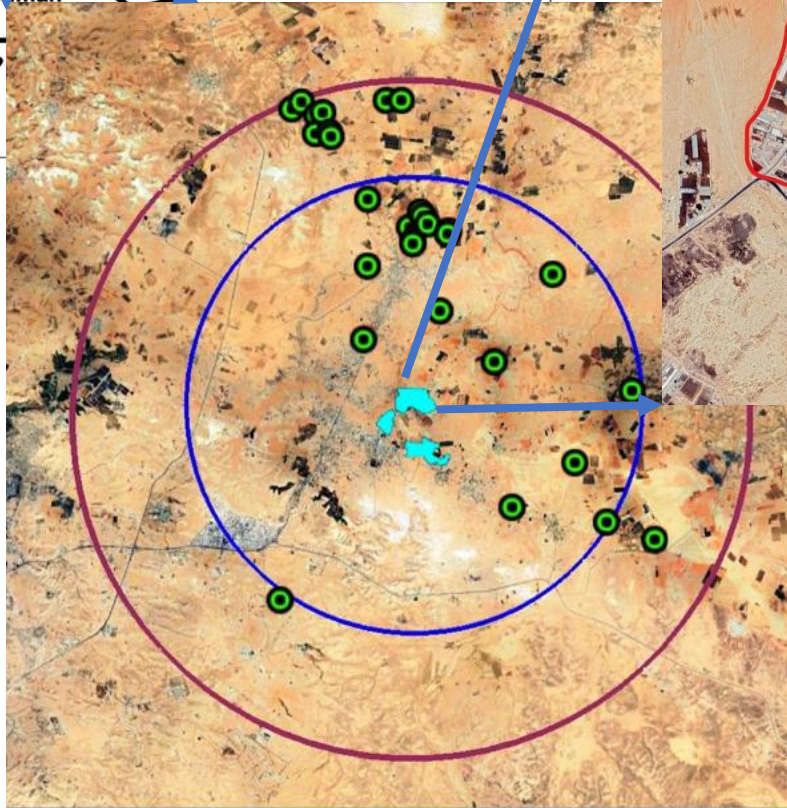
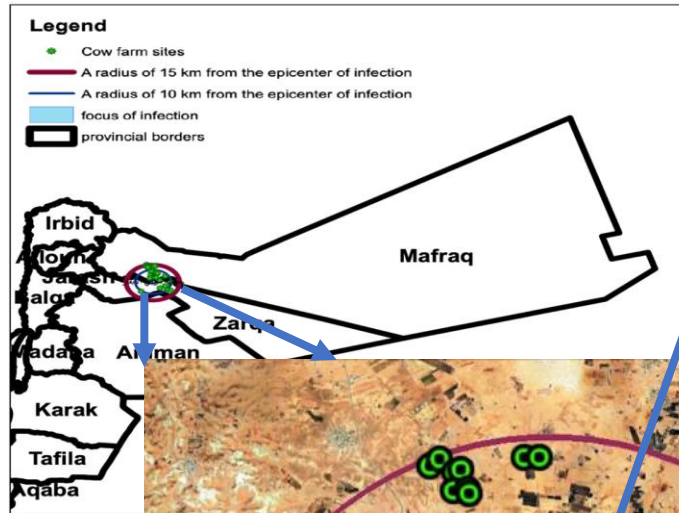
SAT2 in Jordan



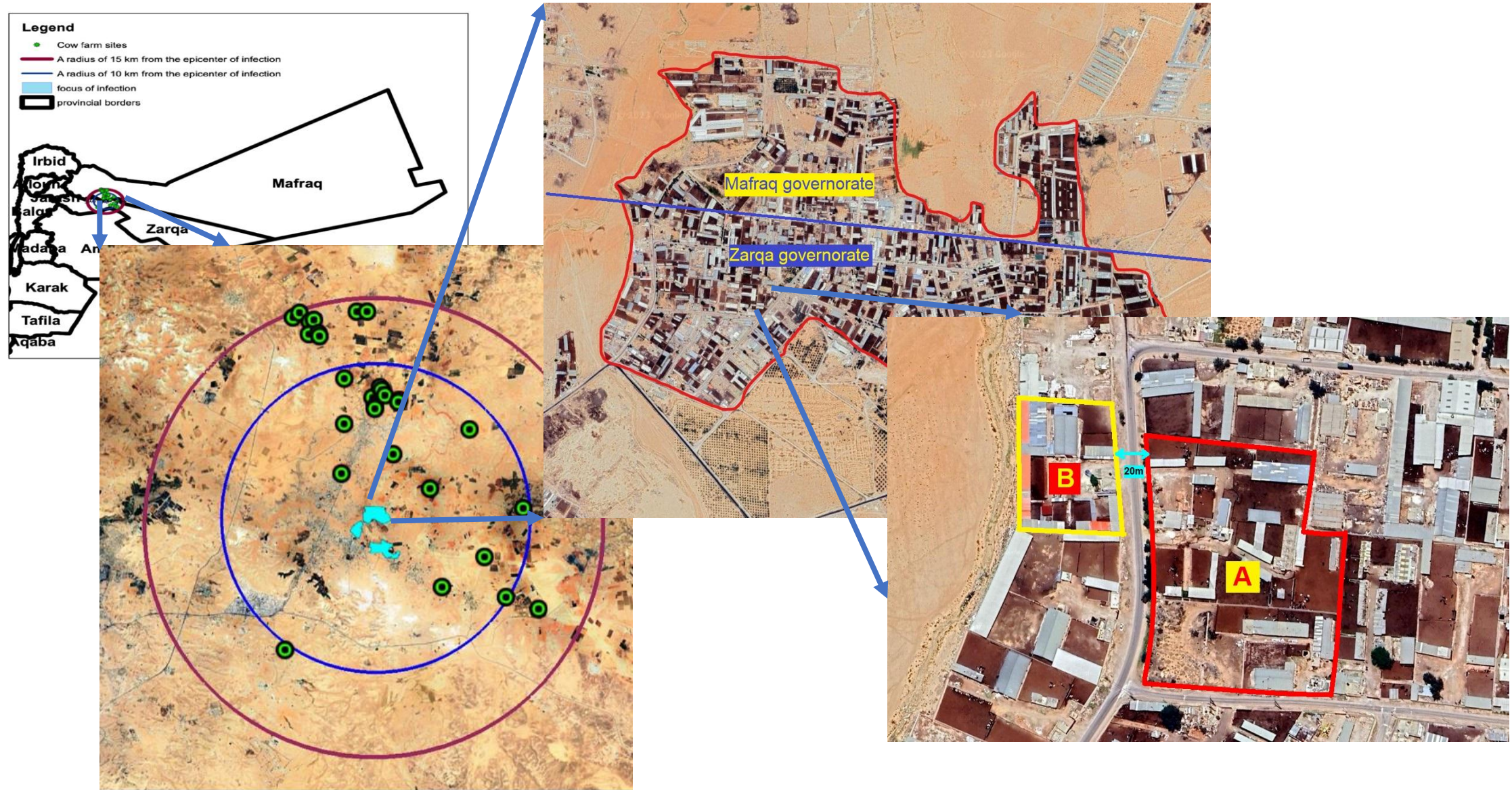
SAT2 in Jordan



SAT2 in Jordan



SAT2 in Jordan



Recent FMD Outbreak 2023

Identification of the protection zone and the surveillance zone and thus built up on it to implement and apply the control measures, biosecurity and movement restrictions by the veterinary services and other governmental agencies. (local administration /Ministry of interior affair /police /municipalities)

- Genotyping /Pirbright

Vaccine matching report /Pirbright

Vaccination campaign in response has been organized around the epicenter of the outbreaks

Doses of vaccine against SAT-2 (Boehringer) were provided by the Ministry of Agriculture on the 10th of February and the vaccination campaign started

Resolved status on March 2023

Vaccination plan in the outbreak zone conducted with a vaccine containing inactivated SAT2/Eritera98 (infected area after 2 incubation period after the last reported case)

JORDAN

EIDSS

Daily FMD outbreak official reports , which were published on the MOA official website

were based on data on EIDSS(early reporting system)

Outbreak Details

Translation Tool|C11

Paper Forms

SaveOKCancelDelete

General Information

Outbreak ID

OWEB00230007

Start Date

End Date

Diagnosis/Diagnoses Group

Infection with Foot and

Outbreak Status

On-going

Primary Outbreak Location

Jordan, AZ ZARQA, Qac

Primary Case/Session

VWEB00230454, Infect

Description

3 Dairy cattle farms in the same Epi-unit showed clinical signs of FMD; Mouth, udder, and hoof lesions. Fever, lameness, loss of milk production. 1 fattening calf farm also infected all measures have been taken.

Related Case/Session Reports

Mark as Primary

Add Human Case

Add Veterinary Case

Add VS Session

		Case/Session ID	Case/Session Date	Source of Case/Session Date	Case Classification	Diagnosis
<input type="radio"/>		VWEB00230618	2	Assigned Date		Foot and mout disease(FMD), Infection with Foot and mout disease(FMD)
<input type="radio"/>		VWEB00230620		Start of Signs		Infection with Foot and mout disease(FMD)

JORDAN

General Applied measures :

- ❖ DISINFECTION
- ❖ MOVEMENT CONTROL
- ❖ QURANTINE (infected area/ closing the livestock market for 14 days)
- ❖ SURVELLANCE OUTSIDE & RESTRICTED ZONE
- ❖ Vaccination

JORDAN

Due to economic losses:

- ❖ Compensation
- ❖ (soon socioeconomic study with eufmd)

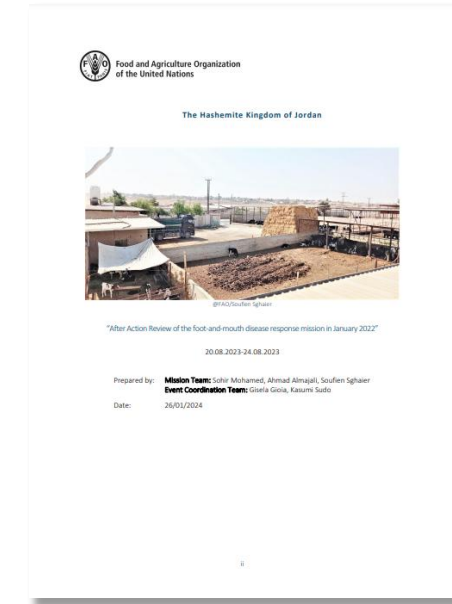
JCRAN

External missions ;

- FMD Sat 2 outbreak investigation /IZS 2023
- AAR 2 mission /FAO 2023 after outbreak

As result

- ERP emergency response plan /2024 FAO
- Full scale implementation of early warning system (EIDSS).
- Constructing sequencing unit (lab)



JORDAN

Recommendations ;

- ❖ Beef farm Officially warned to mobilize outside dairy cattle area
- ❖ Intensive inspection at the borders

JORDAN

Improved livestock trade standards

- ❖ Constructed quarantine facilities to export sheep with high biosafety and biosecurity measures
- ❖ Obligatory vaccination
- ❖ Public private partnership (private lab accreditation)

JORDAN

SAt₂

Thank you

JCRAN