

# Fostering WOAAH - Middle East Partnership: Unlocking Investment Potential

**Nada Essawy, PhD, B.Pharm**  
Resource Mobilisation and Grants Management Officer  
Engagement & Investment Department, WOAAH

**3 October 2023**

**17th Conference of the Regional Commission for the Middle East  
Riyadh, Saudi Arabia, 1-5 October 2023**



World  
Organisation  
for Animal  
Health  
Founded as OIE

Organisation  
mondiale  
de la santé  
animale  
Fondée en tant qu'OIE

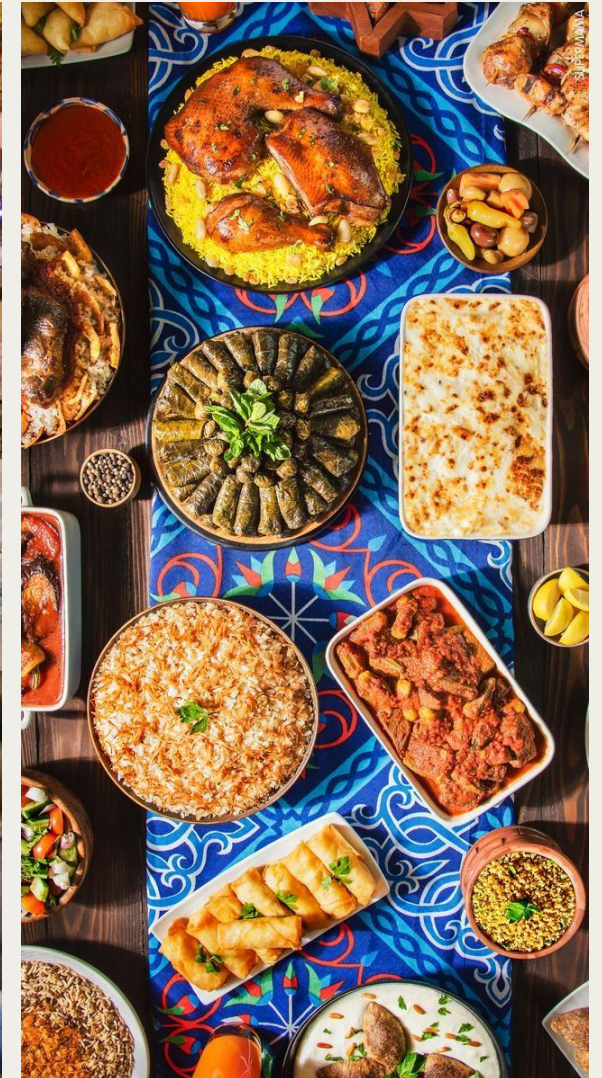
Organización  
Mundial  
de Sanidad  
Animal  
Fundada como OIE



**a) Cultural Significance**



**b) Culinary Tapestry**



**c) Animal Welfare**



# Why invest in Animal Health ? 2) Global Impact of Animal Diseases

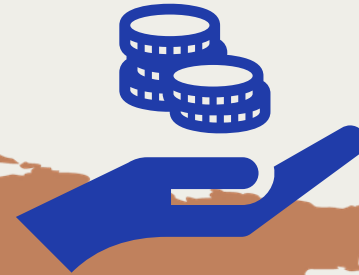


**2 billion**

people affected by **zoonotic diseases** annually

**2 million**

**deaths** every year



**Cost of AMR ≈**

**\$3.4 trillion**  
by 2050

Containing AMR costs **\$9 billion** annually with **88%** annual rate of return

**3.6 trillion**

A large green arrow pointing downwards, with a white circle containing a dollar sign (\$) in the center of the arrow's shaft.

worth of goods, services, and output lost due to **COVID-19**



# Why invest in Animal Health ? 3) The High Cost of Animal Disease Outbreaks in the Middle East

## HPAI

2015-2016 outbreaks in Iraq →  
Economic costs ≈ millions.



## RVF

2000 outbreaks in Saudi Arabia and Yemen →  
Death of > 2,000 camels.  
Costs ≈ several million \$\$



## FMD

Periodic outbreaks in the region → historically led to billions of \$\$ in economic losses.



## MERS

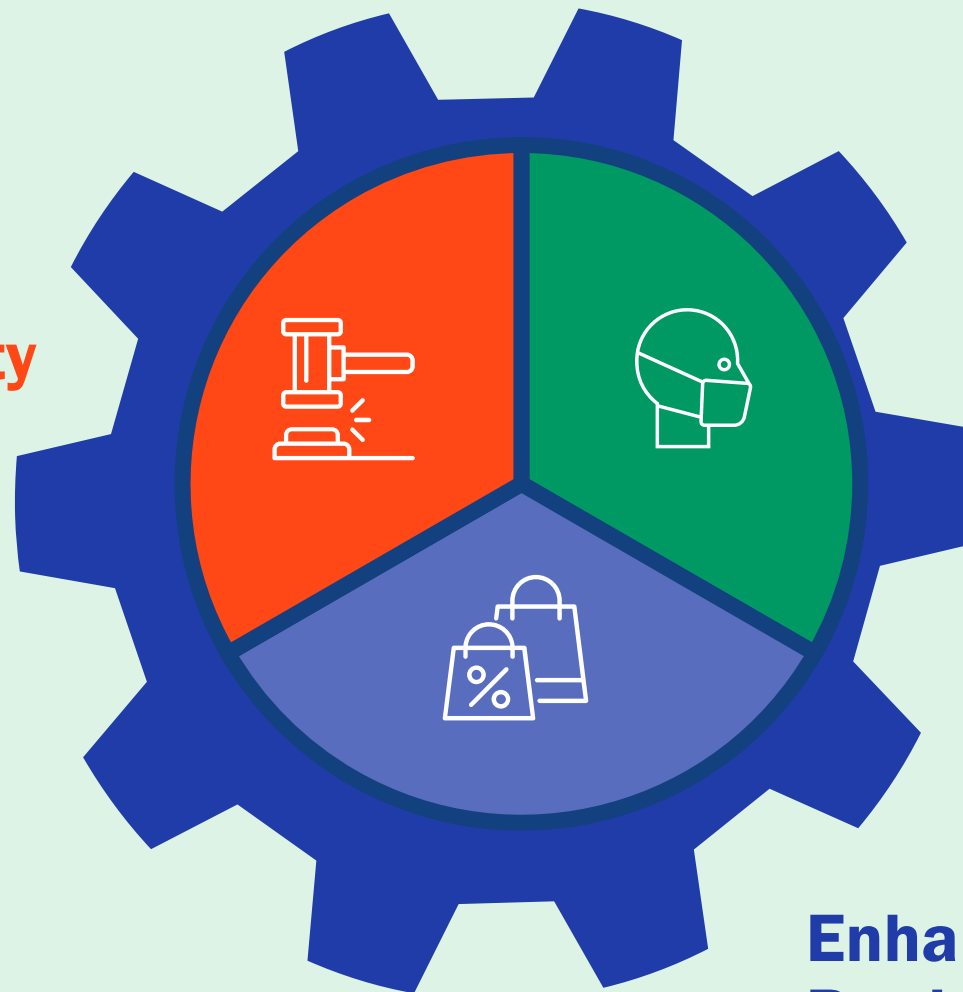
2012 outbreak →  
Saudi Arabia alone economic downturn > \$10 billion.



# Why is WOAHA a Strong Case for Investment ? A Multi-Faceted Return on Investment

---

**Leadership Opportunity**



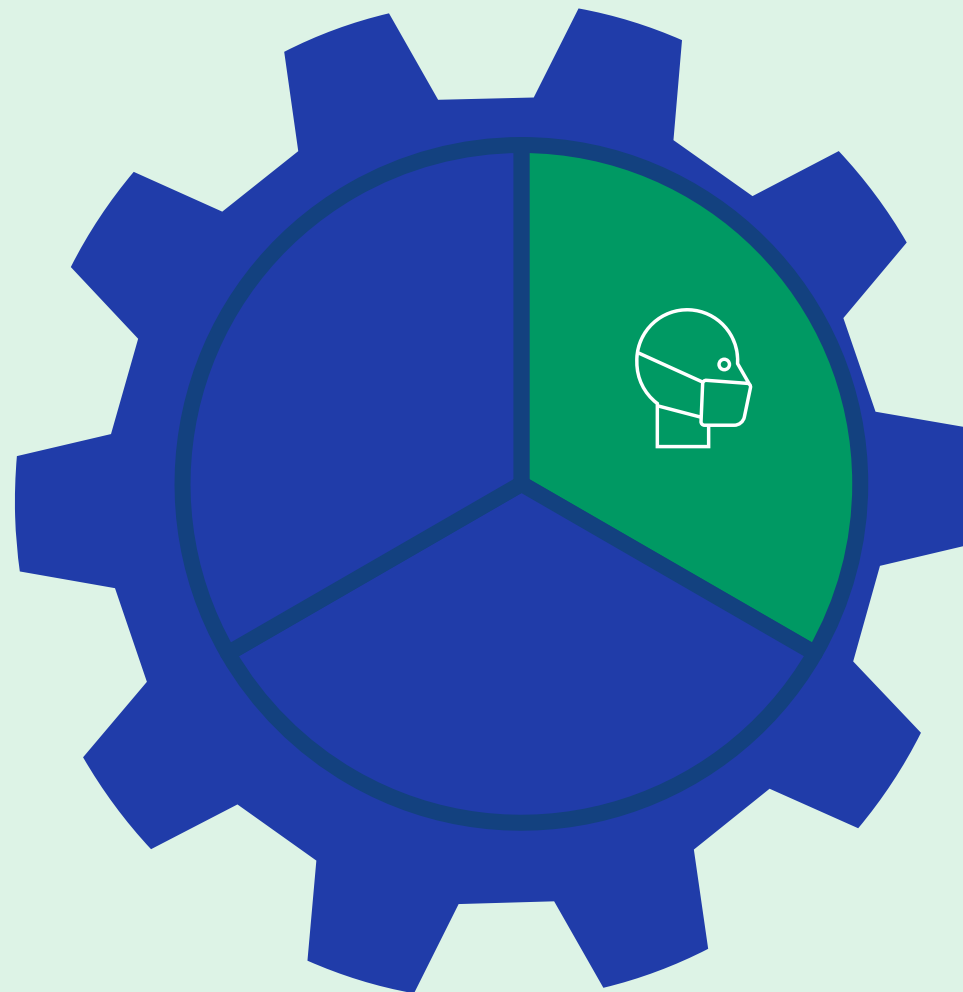
**Strengthened  
Health Security**

**Enhanced Trade,  
Production, and Investments**



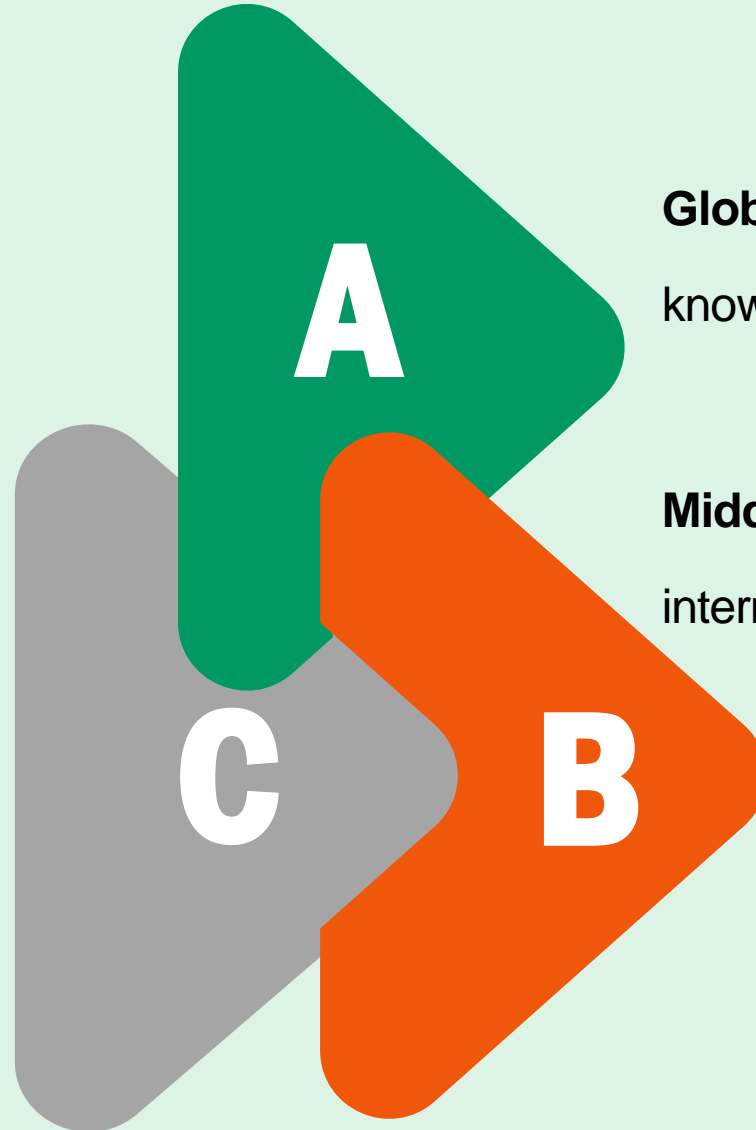
# Why is WOAAH a Strong Case for Investment ? A Multi-Faceted Return on Investment

---



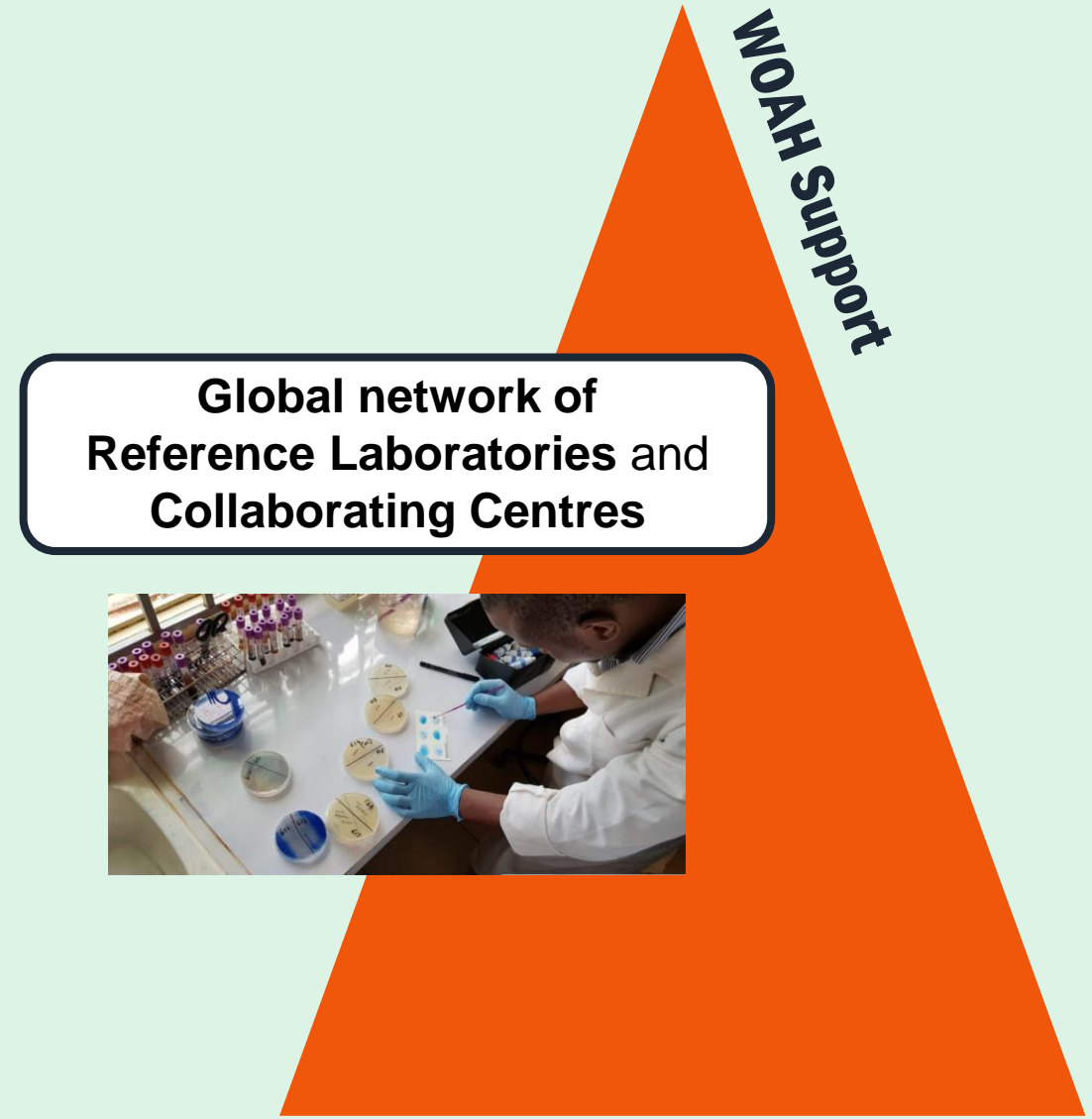
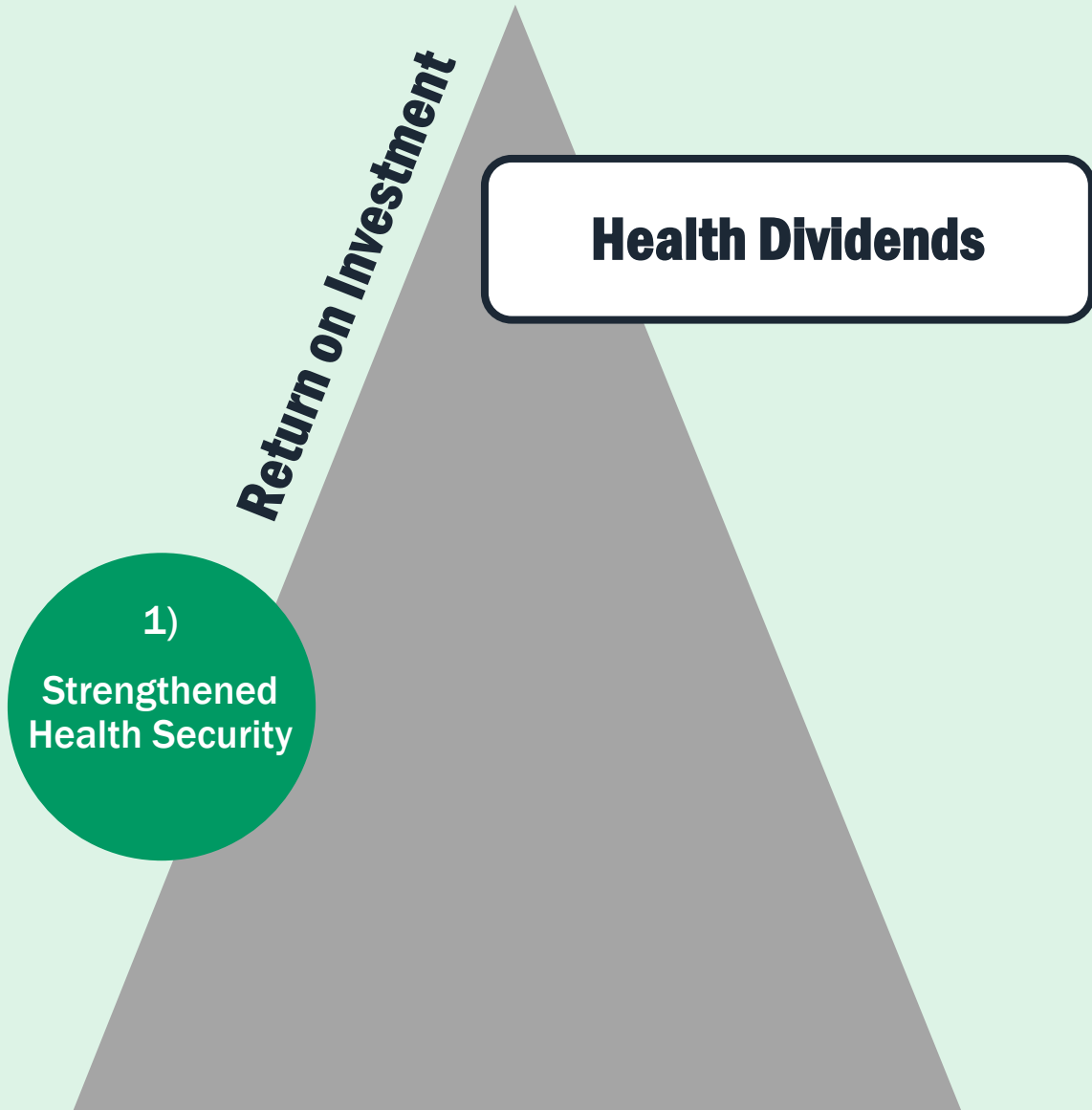
**Strengthened  
Health Security**

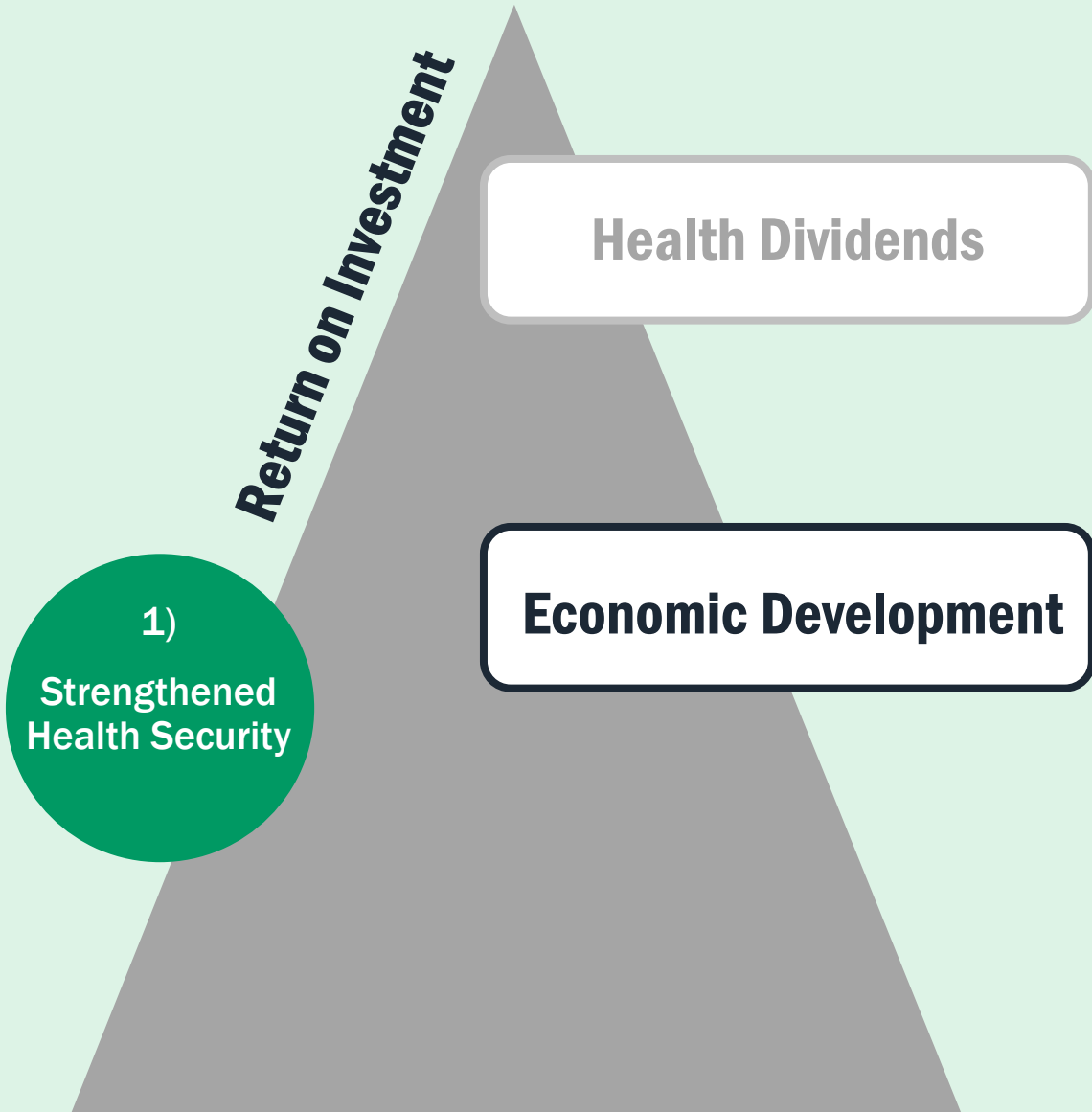
**Environmental changes –**  
Significant rise in the spread of TADs  
in recent years










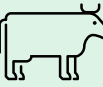

**Globalisation –** Animal diseases  
know **NO** border

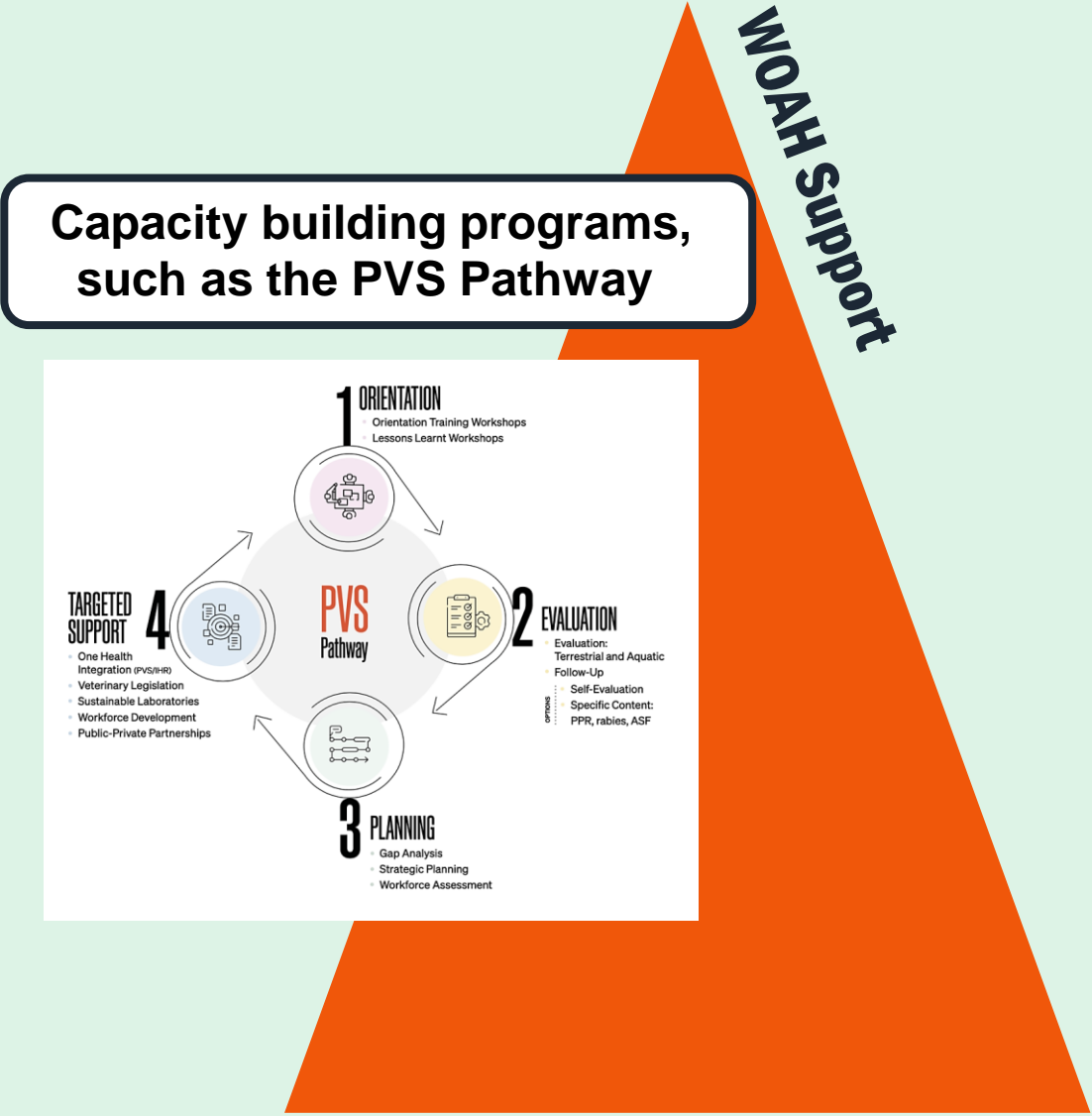
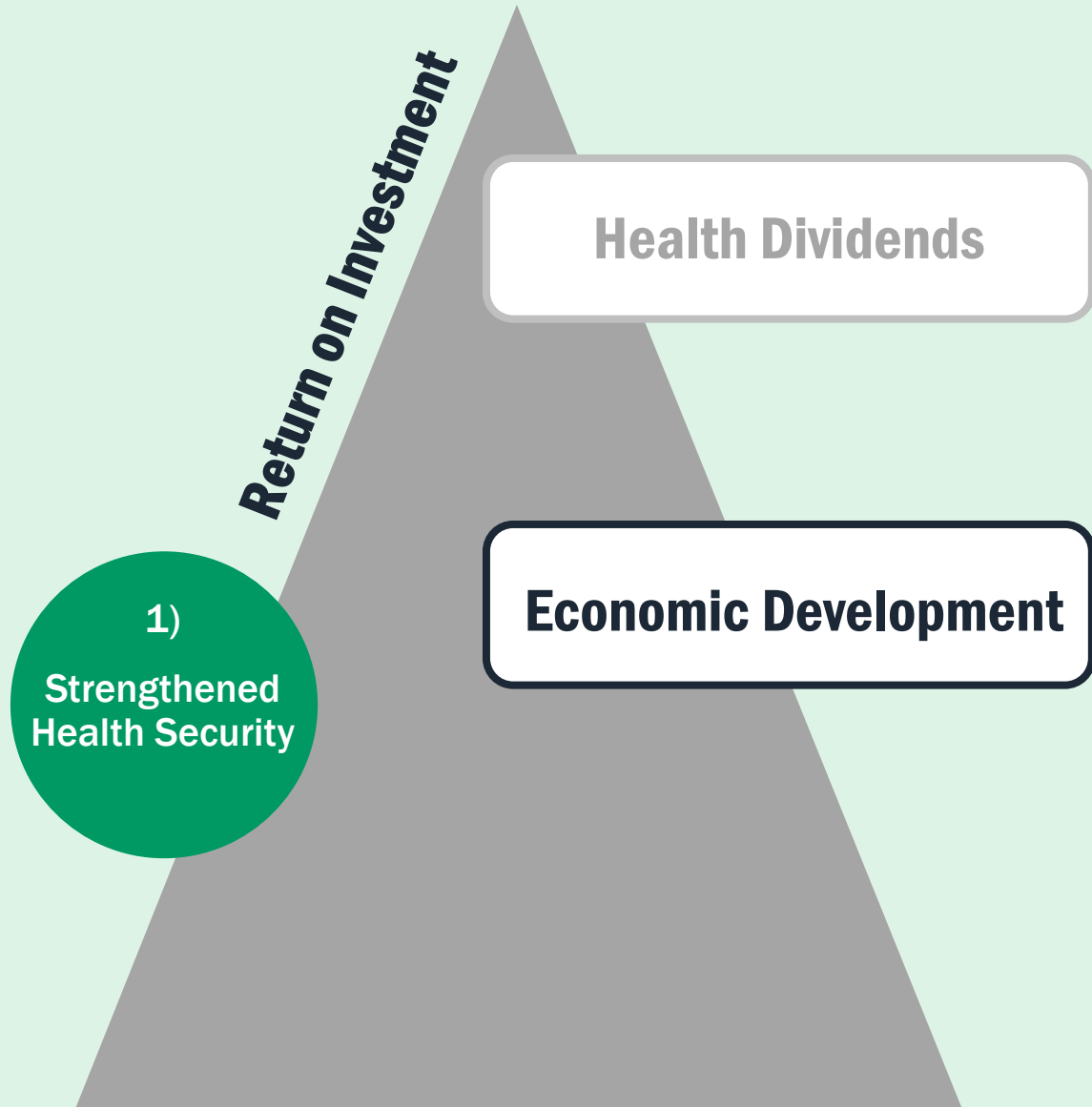
**Middle East location –** Nexus for  
international trade routes and migrations

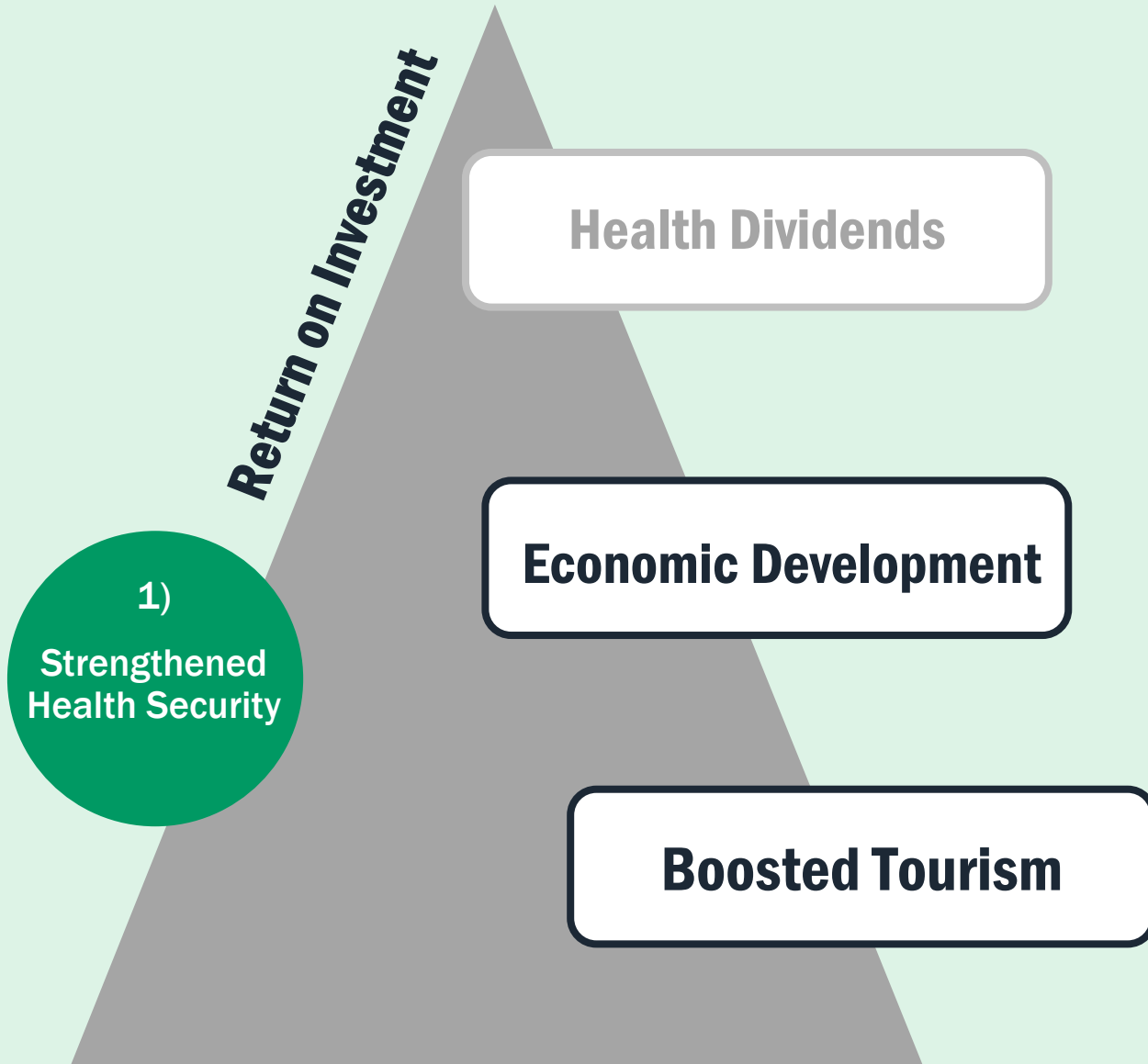




## Food security and national economy

-  • **450,000** 
- **5 million**  and  
-  • **9% of national GDP and 25% of employment**   

- **11 % of agricultural production value + a source of livelihoods for about 800 000 people** 





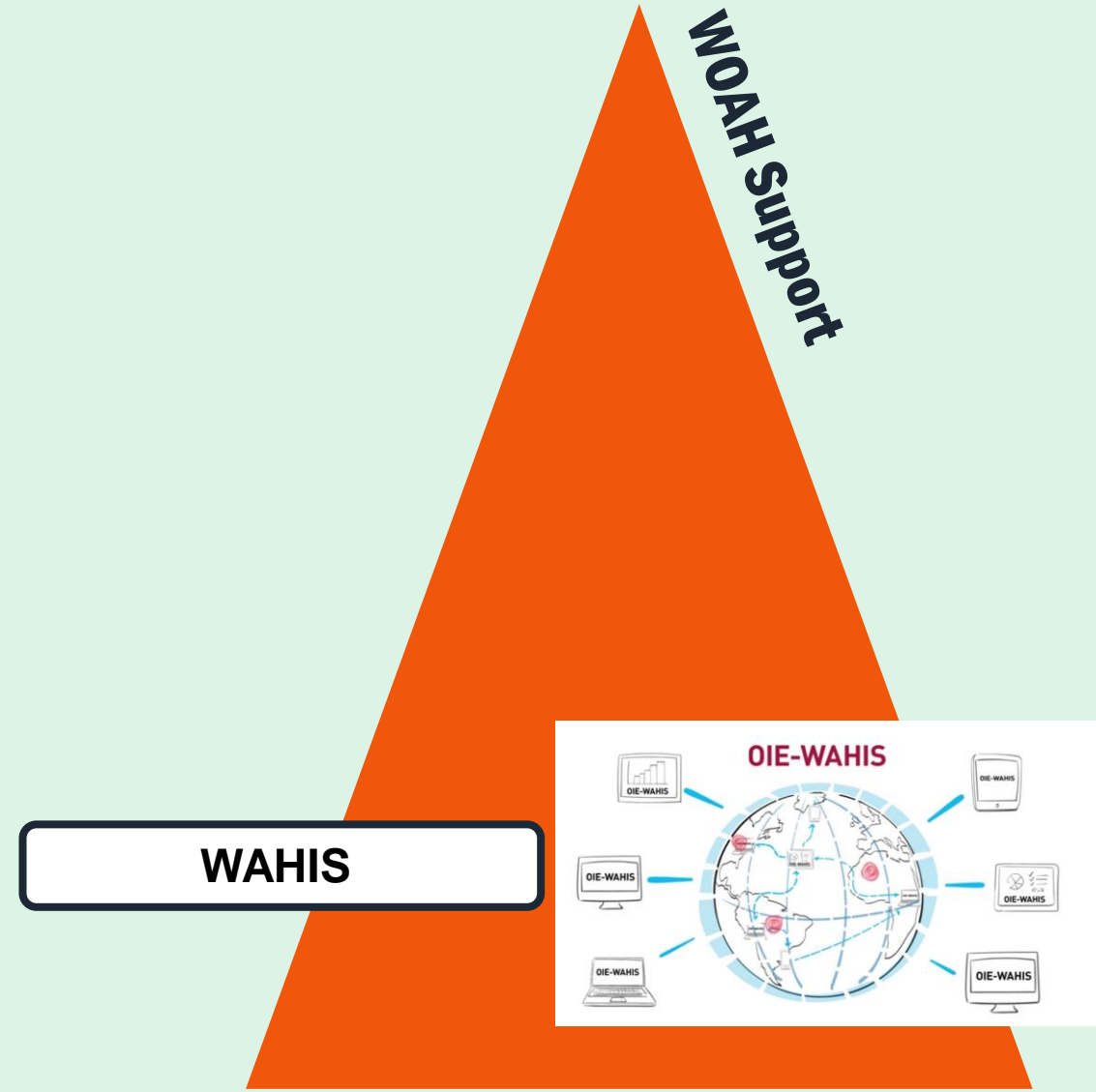
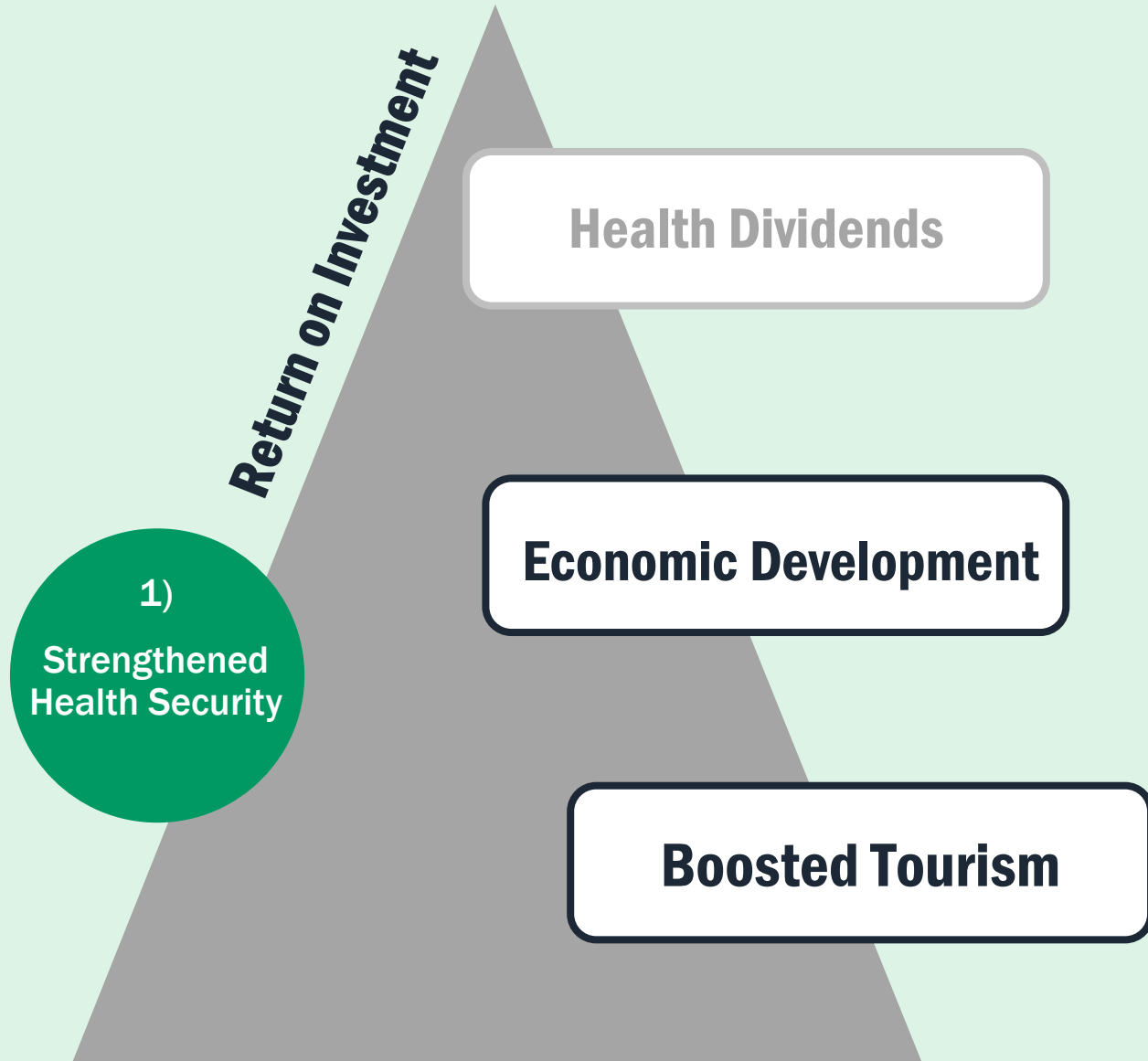
## Disease outbreaks



Reluctance from travellers

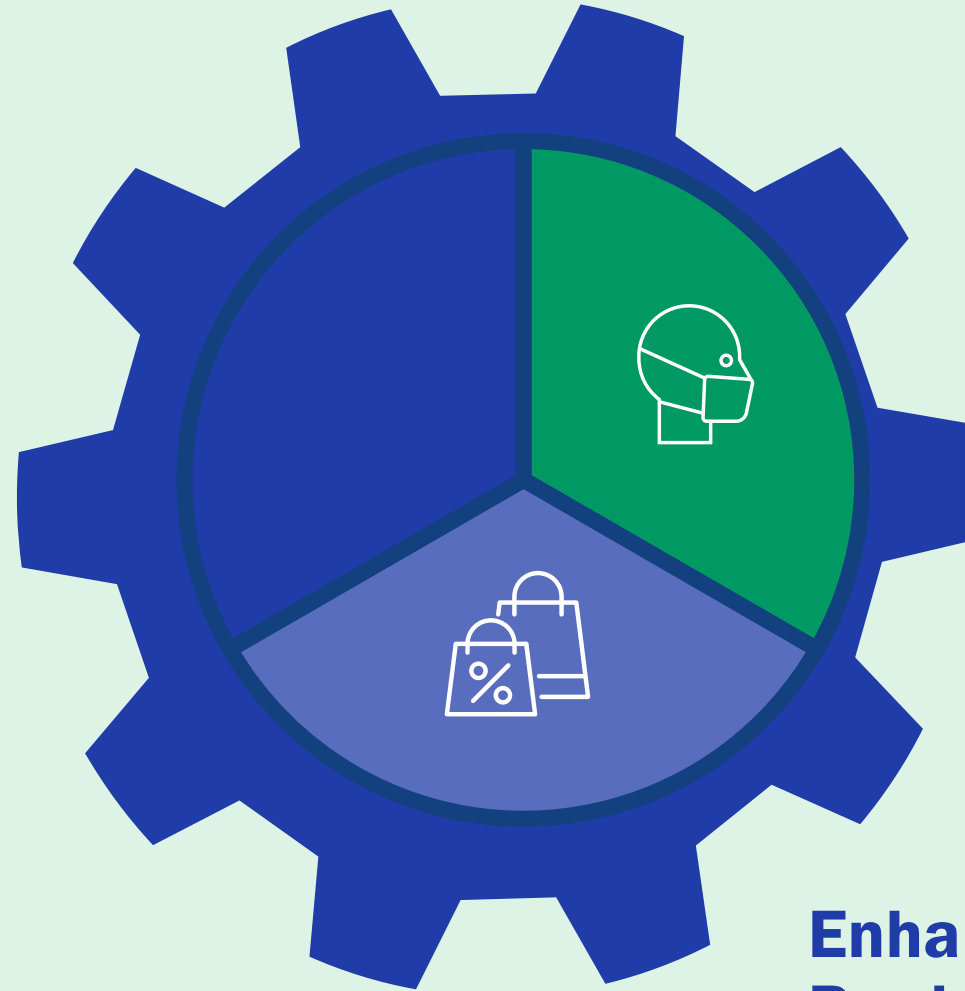
Travel advisories

Travel ban



# Why is WOAAH a Strong Case for Investment ? A Multi-Faceted Return on Investment

---

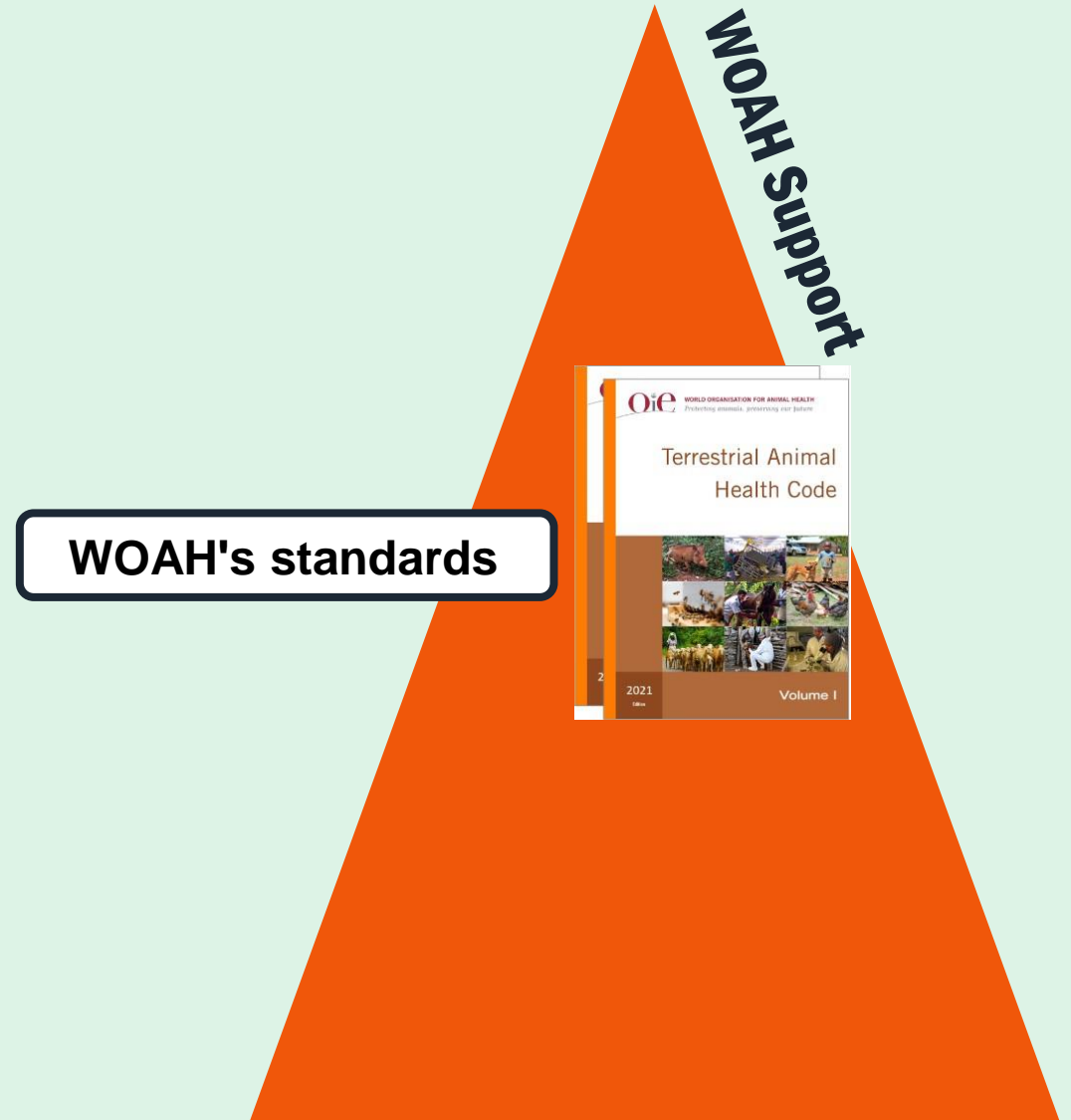


**Strengthened  
Health Security**

**Enhanced Trade,  
Production, and Investments**

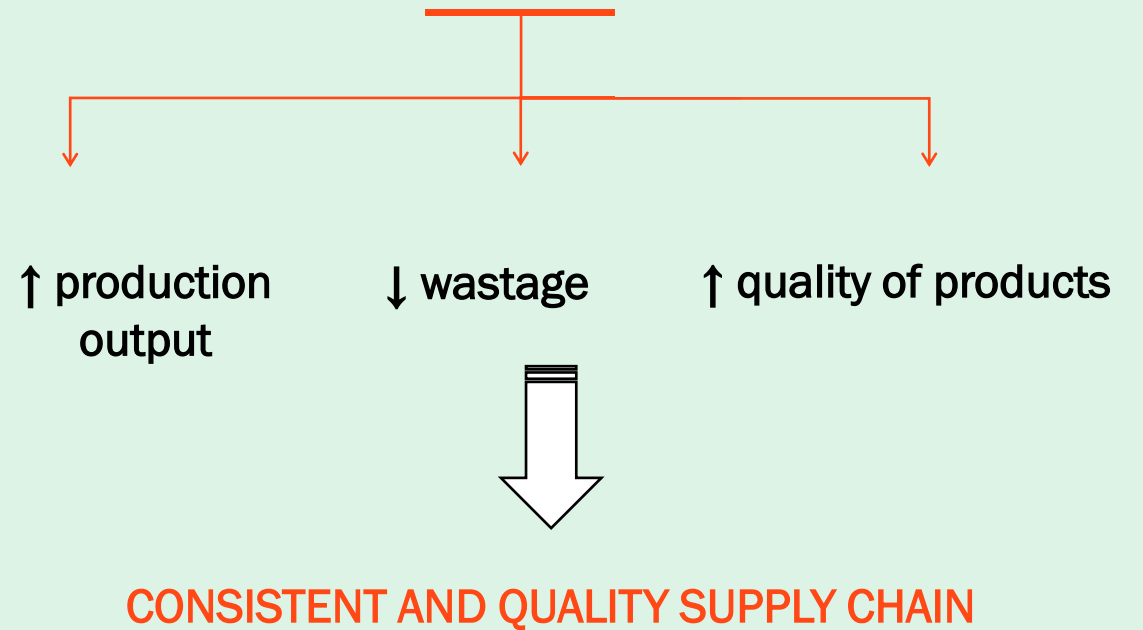




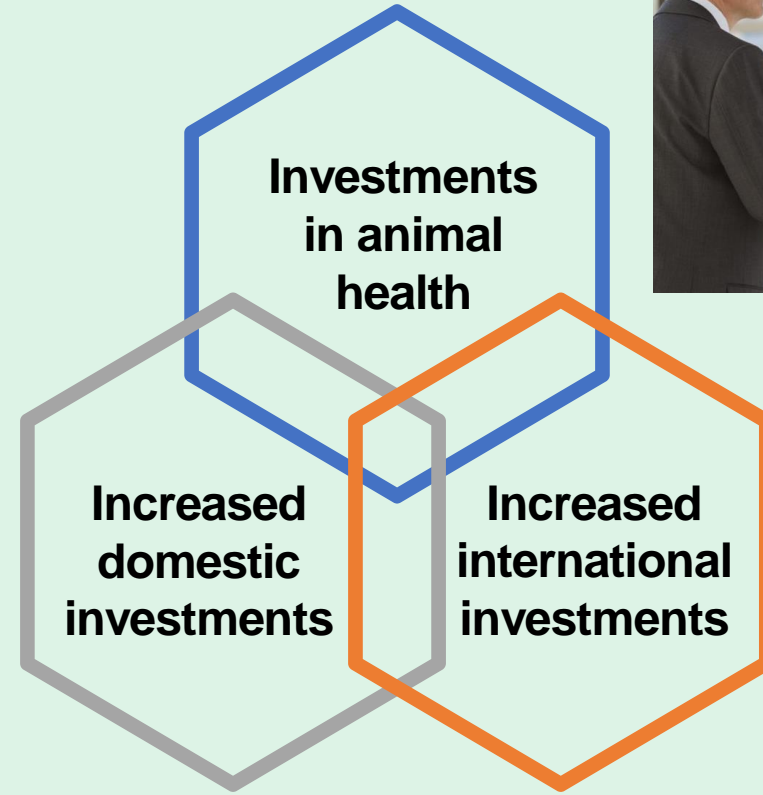
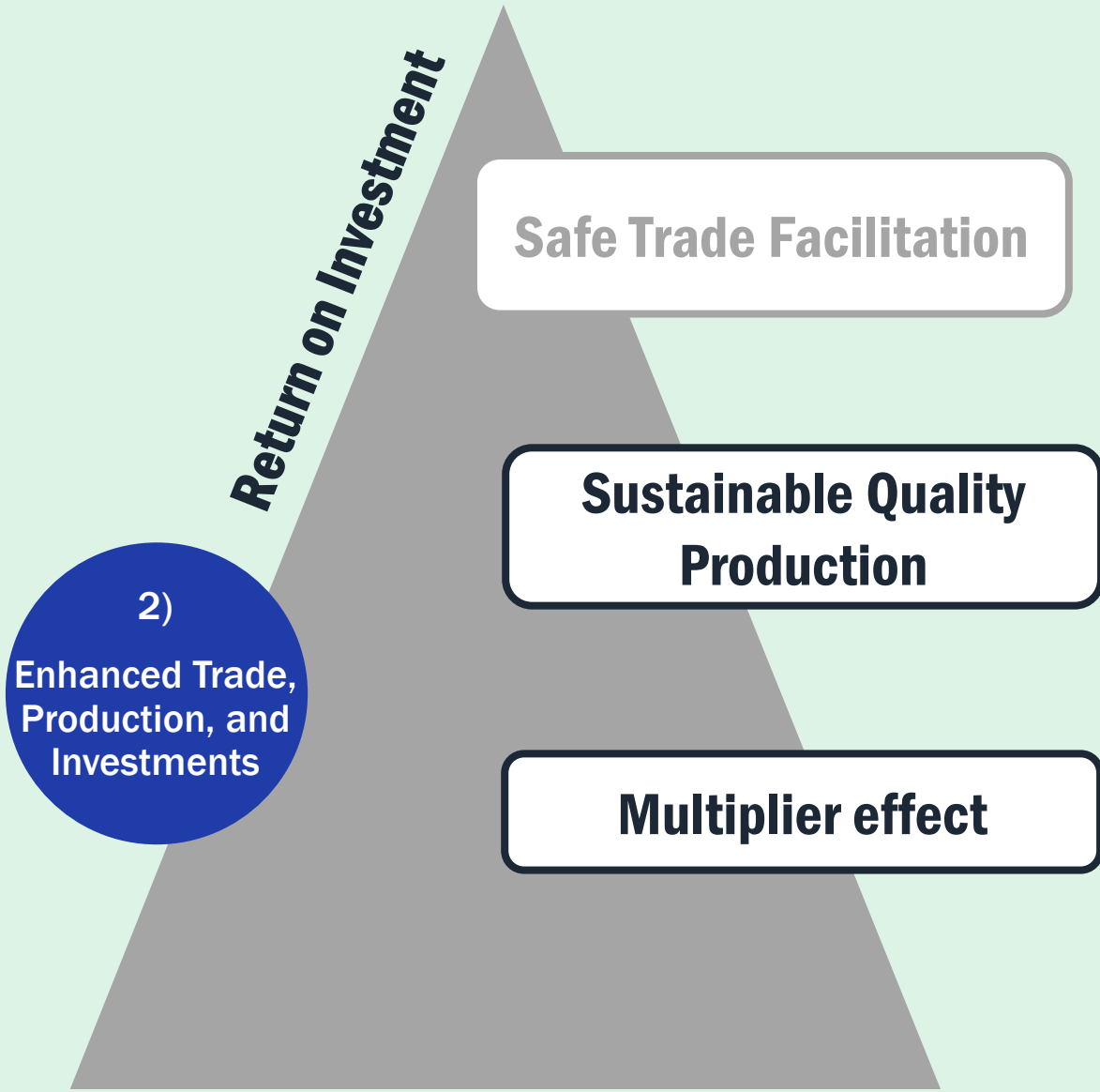




## Healthy livestock and aquaculture



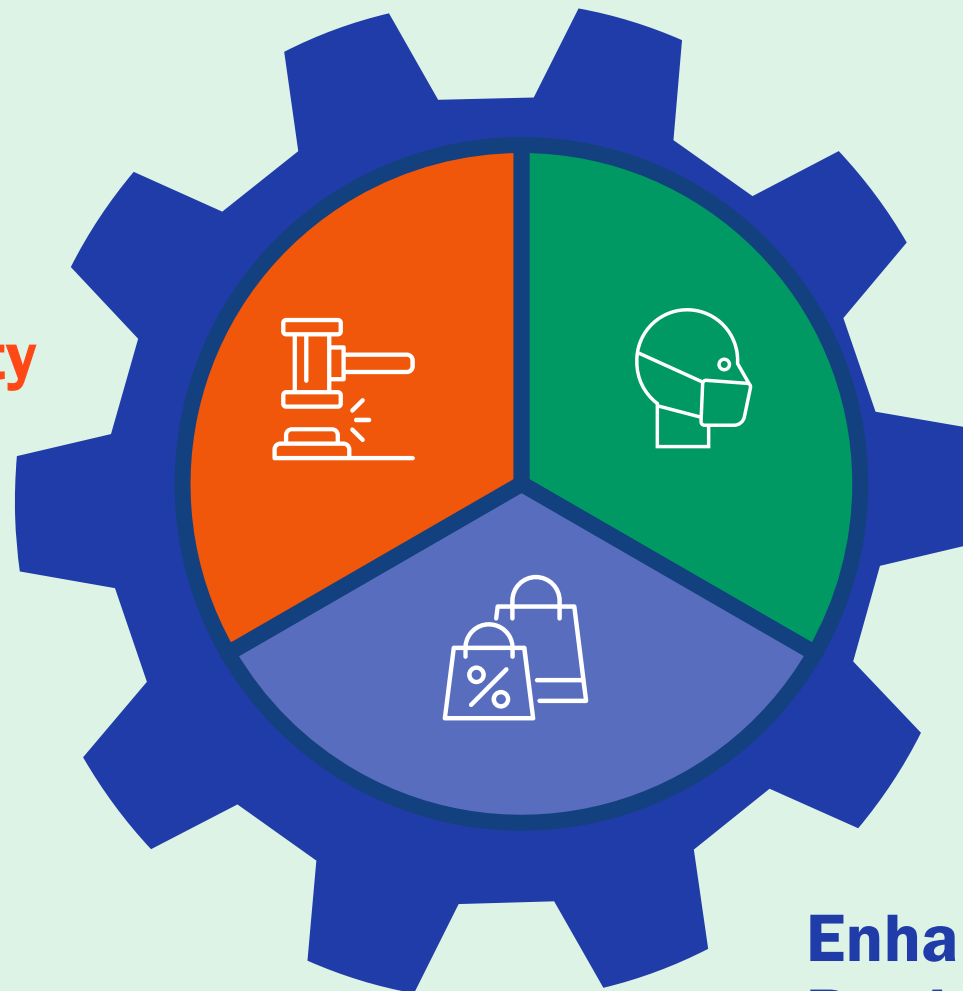




# Why is WOAHA a Strong Case for Investment ? A Multi-Faceted Return on Investment

---

**Leadership Opportunity**



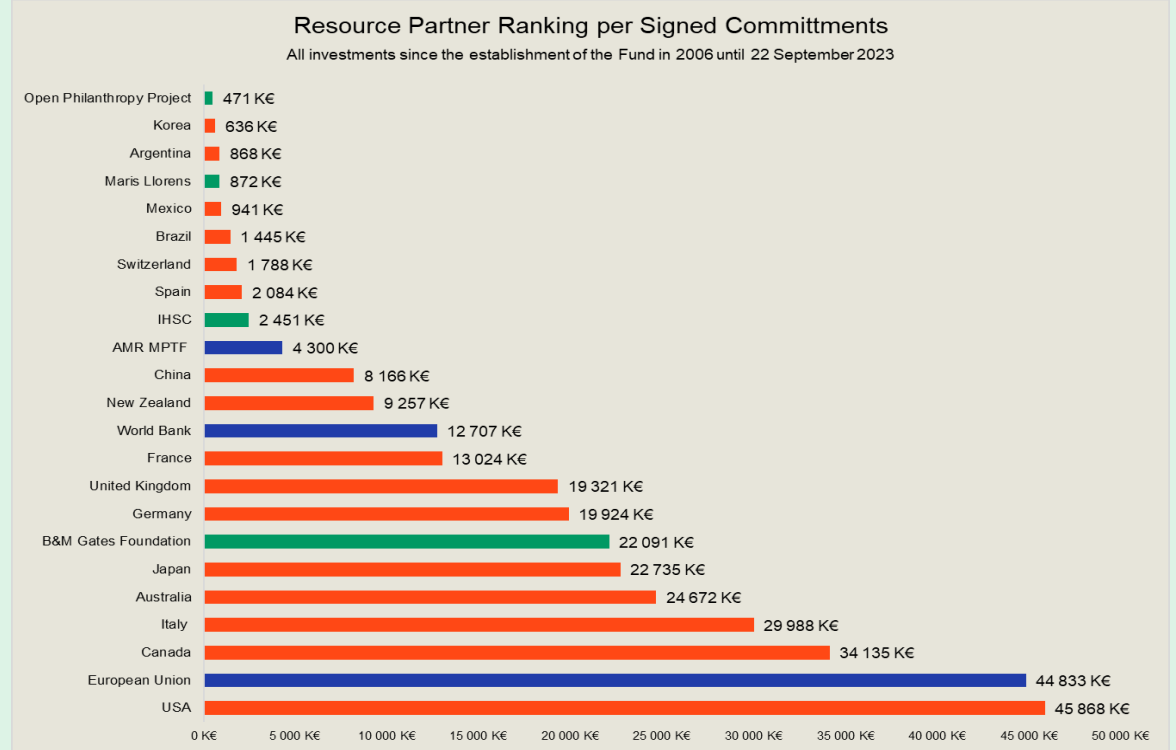
**Strengthened  
Health Security**

**Enhanced Trade,  
Production, and Investments**

Return on Investment

Regional Leadership and Regional Development

3) Leadership opportunities



A diverse collective of Members and organisations → continuously invested in the World Fund

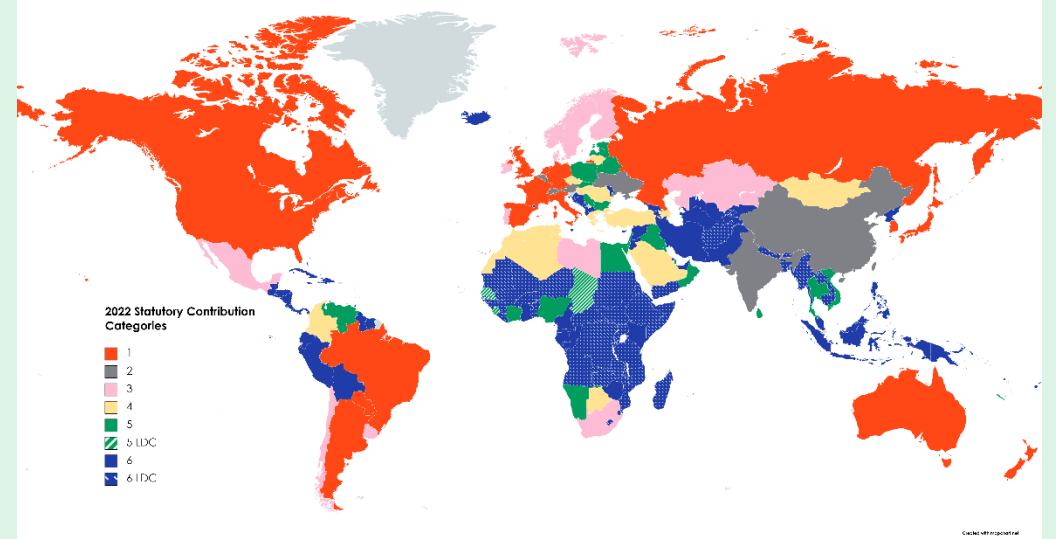


Current contributions from the Middle East to World Fund → inexistent

*Return on Investment*

**Regional Leadership and  
Regional Development**

**3)  
Leadership  
opportunities**



**No Member from the Middle East currently provides statutory contributions for categories > 4**

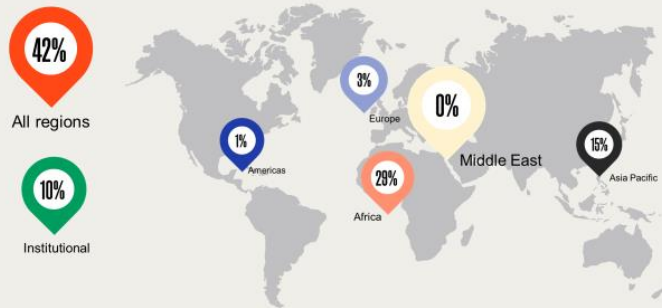


Return on Investment

Regional Leadership and Regional Development

3) Leadership opportunities

Geographical distribution | Grants signed 7SP (2021-2023)

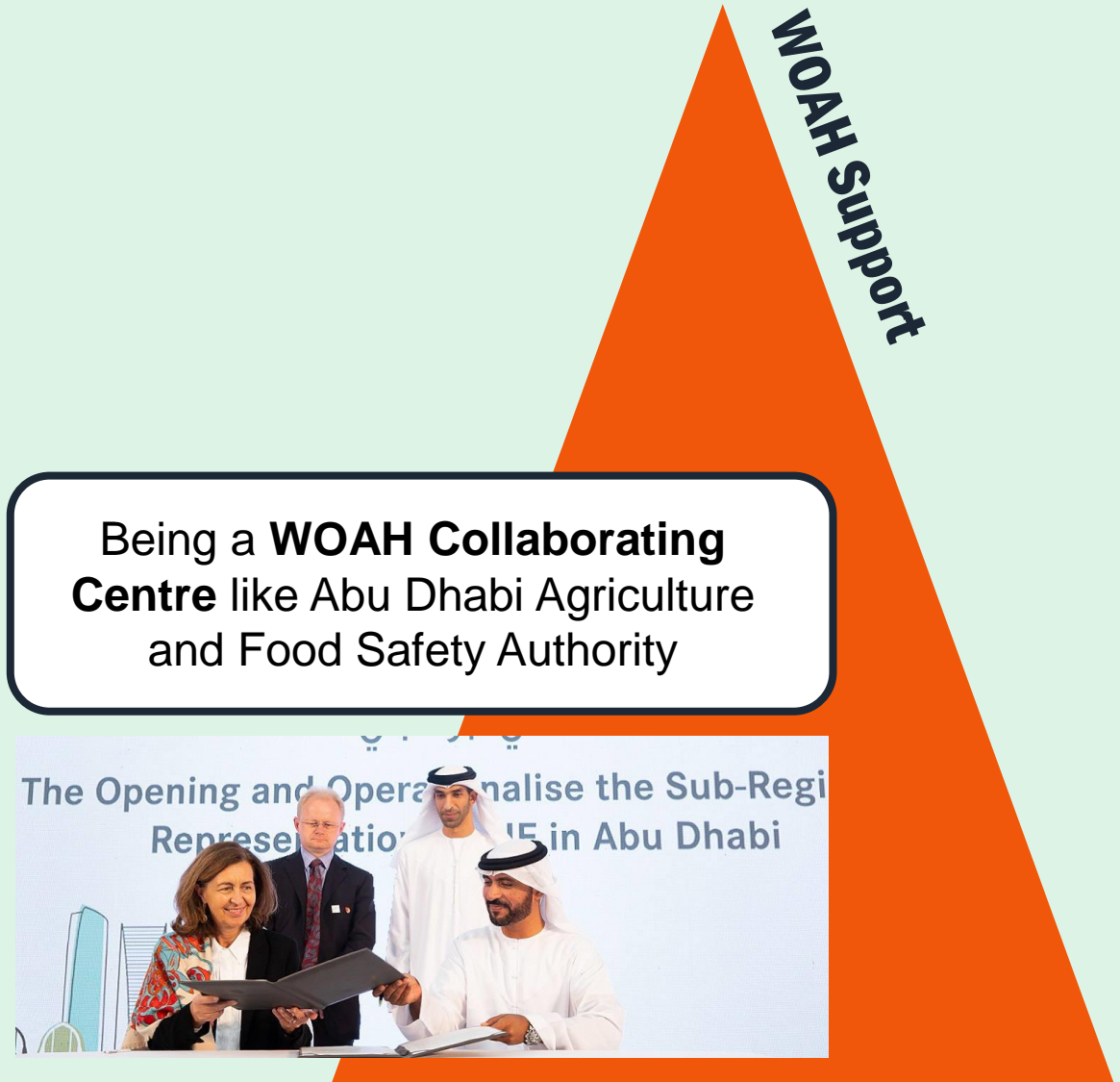


WOAH Support

Middle East to position itself as a **global leader** in animal health

Targeted regional investment from the region to the region



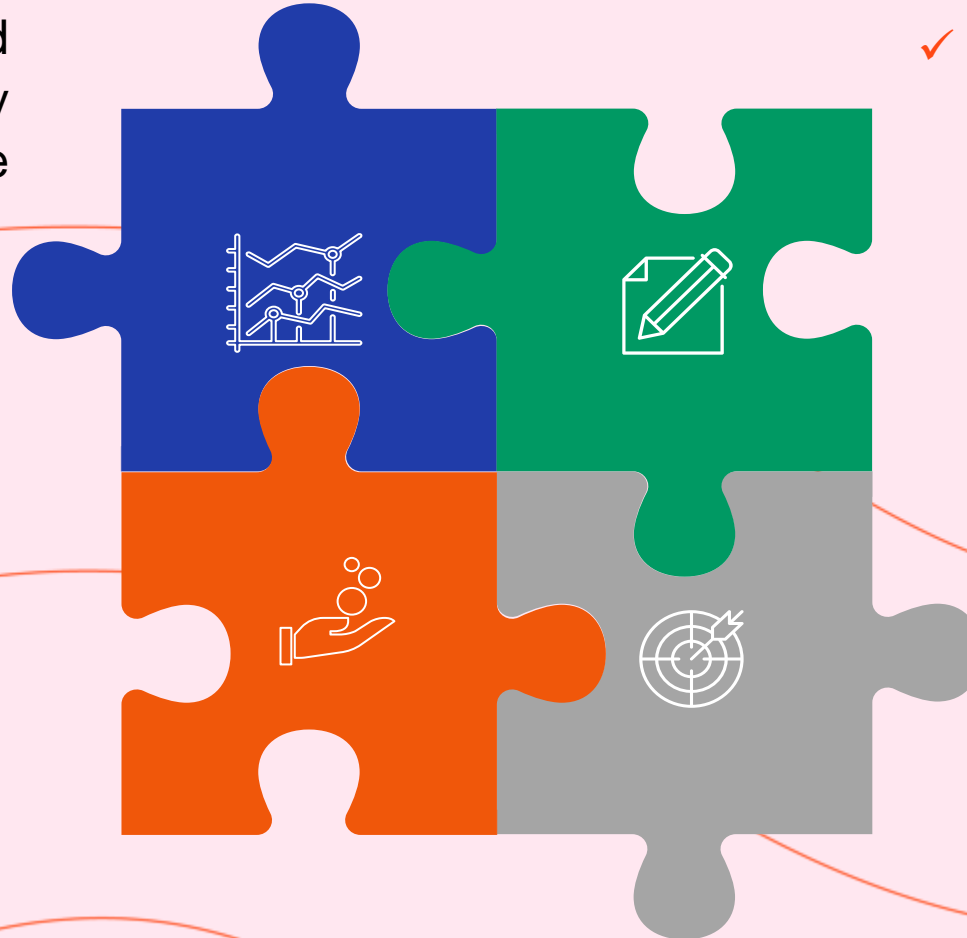


- ✓ Positive economic ripple effect
- ✓ Bolsters livelihoods
- ✓ Promotes sustainable growth & prosperity

## Statutory contributions:

- ✓ ↑ to 295,025 EUR (Cat. 1)
- ✓ To empower WOAAH and ensure that it is sufficiently resourced to fulfil its mandate and service its Members.

**Voluntary contributions:** Fund specific projects aligned with regional goals



## Extraordinary contributions:

- ✓ 300k or 500k EUR for 2024
- ✓ concerned Members shall be exempt from their statutory contribution for the year in question

## Advocacy & Engagement:

- ✓ Engage with ministries & stakeholders
- ✓ Articulate the benefits of WOAAH investment
- ✓ Strengthen collective efforts

# Thank you

---

12, rue de Prony, 75017 Paris, France  
T. +33 (0)1 44 15 19 49  
F. +33 (0)1 42 67 09 87

woah@woah.org  
www.woah.org

[Facebook](#)  
[Twitter](#)  
[Instagram](#)  
[LinkedIn](#)  
[YouTube](#)  
[Flickr](#)



World  
Organisation  
for Animal  
Health

Organisation  
mondiale  
de la santé  
animale

Organización  
Mundial  
de Sanidad  
Animal





# Questions/ Discussion

