

# Introducing ANIMUSE and its main functionalities

---

Mduduzi Magongo  
Business Project Management  
Support

10-12 May 2023  
Dubai, UAE



World  
Organisation  
for Animal  
Health  
Founded as OIE

Organisation  
mondiale  
de la santé  
animale  
Fondée en tant qu'OIE

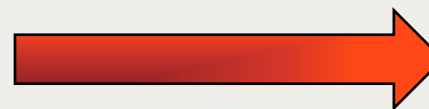
Organización  
Mundial  
de Sanidad  
Animal  
Fundada como OIE

# ANIMUSE : ANiMal AntiMiCrobial USE Global Database

- ✓ Link: [amu.woah.org](http://amu.woah.org)
- ✓ Rebranding of system



  
WORLD ORGANISATION  
FOR ANIMAL HEALTH



 World Organisation  
for Animal Health  
Founded as OIE

## 8<sup>th</sup> Round Opening

Invitation letters for the 8<sup>th</sup> Round of data collection were sent to countries. Members were also invited to create their ANIMUSE accounts and passwords

19/09/22



## ANIMUSE Launch

More than 200 participants, at least 65 members represented. [Launch video link.](#)

21/09/22



## Login Success rate (74%)

As of 09/05/2023, the successful login rate to ANIMUSE for Middle East is 75% and 74% globally.

On-going



## Training – Africa (EN)

In person ANIMUSE training for English Speaking Africa was done in South Africa 2-4 November 2022.

02/11/22



## Training – Africa (FR)

In person ANIMUSE training for French Speaking Africa was done in Tunisia, 30 - November to 2 December 2022.

30/11/22



## Training - Asia

In person ANIMUSE training for Asia in Bangkok, 22 - 24 February 2023.

22/02/23



## Training – Middle East

In person ANIMUSE training for Middle East in Dubai, UAE 10-12 May 2023

10/05



**NB: Training for the Americas (Sept. 2023) and Europe (Nov. 2023)**



<https://amu.woah.org/>

ANIMUSE

amu.woah.org/amu-system-portal/home

World Organisation for Animal Health  
Founded as OIE

ANIMUSE

Search

Country

EN FR ES

Login

RESOURCES

## Welcome

Since 2015, the [World Organisation for Animal Health \(WOAH, founded as OIE\)](#), has taken the lead to build a global database on antimicrobial agents intended for use in animals (AMU). In 2022, WOAH transformed this into an online customized database system: ANIMUSE Global Database (ANImal antiMicrobial USE).

Click to login to national portal

## Who has access?

### Default user profiles

- Delegate
- Focal Point Veterinary Products

### Optional user profiles

- Other National Authority (ONA) x 2

## Data dashboard

EXPORT

World Organisation for Animal Health  
Founded as OIE

## Global Participation

Search

Round: 7th Collection R...

Region: All

Country: All

WOAH Membership: All

## Unique Delegate Permissions

- Create ONA profiles
- Define data confidentiality





# ANIMUSE – 1<sup>st</sup> Time Login Procedure



# ANIMUSE

Please only act on this email if you trust the organization represented below. In rare cases, individuals may receive fraudulent invitations from bad actors posing as legitimate companies. If you were not expecting this invitation, proceed with caution.

Organization: World Organisation For Animal Health  
Domain: [woah.org](https://woah.org)

This message was provided by the sender and is not from Microsoft Corporation.

Message from  
World Organisation For Animal Health:

“ The WOAHS is pleased to invite you to access to its information system. In order to login with your own username and password, click on the “Accept Invite button” ”

If you accept this invitation, you'll be sent to <https://woah.org/>.

[Accept invitation](#)

World Organisation for Animal Health  
amu.woah@gmail.com

**Permission requested by:**

World Organisation For Animal Health  
woah.org

By accepting, you allow this organization to:

- ✓ Receive your profile data  
Your profile data means your name, email address, and photo
- ✓ Collect and log your activity  
Your activity data means your access, usage, and content associated with their apps and resources
- ✓ Use your profile data and activity data  
This data may be used with your access and use of their apps and resources, as well as to create, control, and administer an account according to their policies

You should only accept if you trust World Organisation For Animal Health. [Read World Organisation For Animal Health's privacy statement.](#) You can update these permissions at <https://myaccount.microsoft.com/organizations>  
[Learn More](#)

**This resource is not shared by Microsoft.**

[Cancel](#) [Accept](#)

The screenshot shows the ANIMUSE National Portal interface. At the top, there is a navigation menu with links: HOME, CALCULATION MODULE, QUESTIONNAIRE, DATA VISUALISATION, HISTORY, FAQ, RESOURCES, WORKSHOP 1, WORKSHOP 3, WORKSHOP 4, and USER SUPPORT. A large 'Welcome to your' message is visible on the left. A 'Data Collection Round' section is present, along with a yellow 'Caution Test area' warning box containing a warning icon. A modal window is open in the center, titled 'I. Confidentiality Agreement Between WOAAH and Contributors'. The modal text states: 'I herewith accept to report data on antimicrobial agents intended for use in animals to ANIMUSE. I understand that, once the data have been validated by WOAAH, the Delegate or CVO has the authority in ANIMUSE to define, at any time, the level of confidentiality of the data reported by each round, according to the following categories. I also understand that if the Delegate or CVO does not select any level of confidentiality, the data will remain private as stated in Level 1. LEVEL 1 - PRIVATE: All responses to the AMU Questionnaire, antimicrobial quantities and data provided through the Calculation Module will remain confidential. The data will be aggregated at regional and global level through Power BI charts or tables and only the Antimicrobial Use Team and the Head of the Antimicrobial Resistance and Veterinary Products Department (hereafter AMR&VP Department) will have access. LEVEL 2 - SEMI-PUBLIC: Substances reported under 'Aggregated Class Data' and responses to questions 1.a, 4.a, 6.a, 7.a and 8.a, as stated in the Excel, will remain Level 1 – private. The rest of responses to the AMU Questionnaire and antimicrobial quantities will be disclosed through Power BI charts or tables with a selected and restrained list of WOAAH staff outside the AMR&VP Department. LEVEL 3 – PUBLIC: Substances reported under 'Aggregated Class Data' and responses to questions 1.a, 4.a, 6.a, 7.a and 8.a, as stated in the Excel format, will remain Level 1 – private. The rest of responses to the AMU Questionnaire and antimicrobial quantities will be disclosed through Power BI charts or tables on the public portal of ANIMUSE, including the semi-public portal. By accessing and browsing this website, you accept, without limitation or qualification, the Terms and Conditions and can consult them at any time by using the footer menu below. WOAAH and Azure Directory uses cookies to login users into ANIMUSE'. A 'Confirm' button is at the bottom right of the modal. A 'Continue' button is visible in the bottom left of the page. A 'Caution Test area' box is also present on the right side of the page.



Product level date remains **private**

Notifications

Search | 1 | EN FR ES | Member Name | Mduuzi Magongo

Language Selection

Member Name + User

HOME | CALCULATION MODULE | QUESTIONNAIRE | DATA VISUALISATION | HISTORY | FAQ | RESOURCES | USER SUPPORT

Top Navigation Menu

## Welcome to your national portal

**Data Collection Round**

Follow the advancement of your AMU dossier here

**Start**

- Round opened
- In progress
- Submitted
- Pending clarification
- Validated

Need help to calculate the antimicrobial quantities?  
Enter your information by veterinary product in the

**Calculation Module**



Tracker

Calculation Module

## Data dashboard

**EXPORT**

 **Country Participation**

If the data are **public**, the last two columns will not appear in ANIMUSE public portal. They are shown here for you to check the status and confidentiality. Only **'VALIDATED'** data can pass to public.

Round	Region
...	...

Data Dashboard

Chat



## ANIMUSE Introduction Videos

### Find out more



Completing the **AMU Questionnaire**



Consolidating data with the **Calculation Module**



Understanding your data with the **data visualisation** components







Assist you in performing the calculations to obtain kilograms of active ingredients



Available all year round

HOME **CALCULATION MODULE** ▾ QUESTIONNAIRE DATA VISUALISATION ▾ HISTORY FAQ RESOURCES ▾ WORKSHOP 1 WORKSHOP 3 WORKSHOP 4 USER SUPPORT

Updated on 05/05/2023

Import data

Upload File

Add product

Delete all products

EROXYSTREP FARM 1 KG | 1 kg

Product 1 | 100 ml

Product 10 | 100 g

Product 100 | 100 g

Product 101 | 100 ml

Product 102 | 100 ml

Product 103 | 100 ml

Product 104 | 50 ml

Product 105 | 50 ml

Product 106 | 100 g

Units and Package Sizes

Add units

Total units for the year: **1,100**

Number of units (by packages) imported or sold in a year or the period of time declared to WOH

Select All

Delete

Change year

1 300 units | Added on 05/05/2023 by Mduduzi Magongo

x

2 800 units | Added on 04/05/2023 by Mduduzi Magongo

x

Items per page: 5 1 - 2 of 2 < >

Type of Use Vet. Medical Use

Route of Administration Oral

Animals Covered by the Product Bovine, Sheep, Goats, Poultry

Active ingredient

1 Erythromycin · 35 mg / 1 g

Antimicrobial Class

Macrolides

Calculated amount of antimicrobial agents

38.5

kg

Conversion factor

Not Applicable

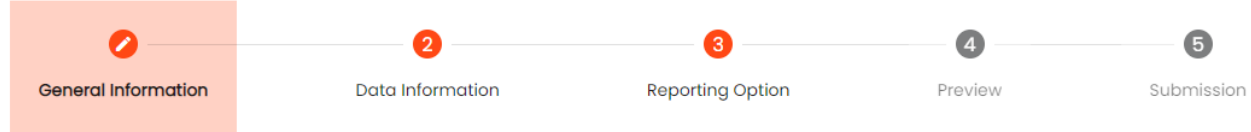
Delete this product

Edit product sheet

HOME CALCULATION MODULE QUESTIONNAIRE DATA VISUALISATION HISTORY FAQ RESOURCES WORKSHOP 1 WORKSHOP 3 WORKSHOP 4 USER SUPPORT

## Questionnaire

Modified on 2023-05-05  
by Mduduzi Magongo (Other)



### General Information

Questions 1 to 4 are related to the current situation in your country. Responses should not be linked to the year of antimicrobial quantities reported.

Import Excel template

Upload File

Export Excel template

1 Are data on the amount of antimicrobial agents intended for use in animals available?  Yes  No

2 Are antimicrobial agents used for growth promotion purposes in animals in your country?  Yes  No  Unknown

Use Calculation Module

No data in the Calculation Module

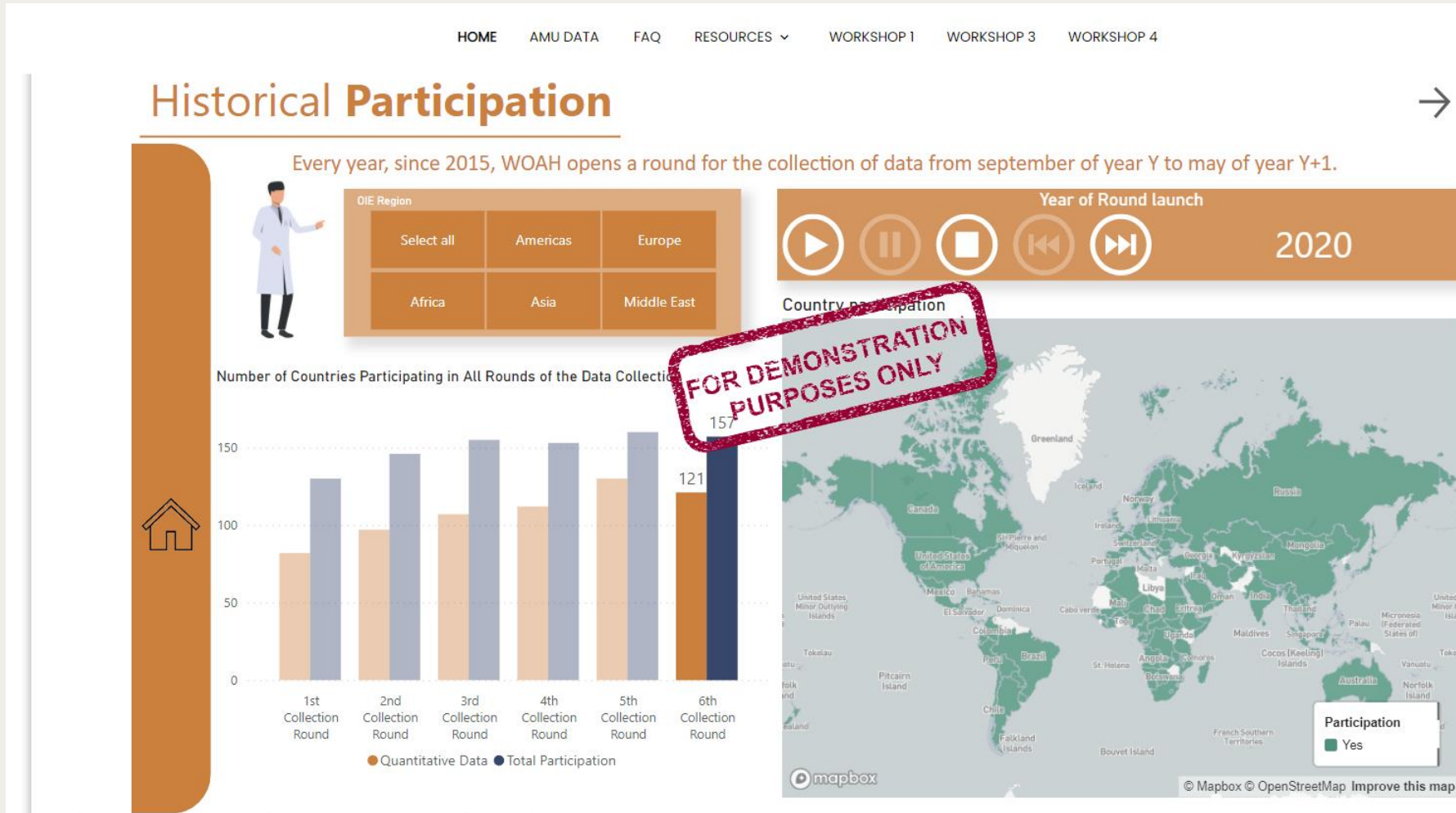
Submit



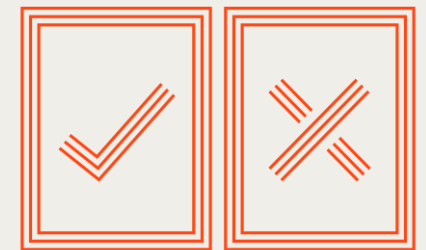
Complete the AMU Questionnaire online



Complete excel template and inject



Visualise your data through interactive dashboards



Make informed decisions

HOME CALCULATION MODULE ▾ QUESTIONNAIRE DATA VISUALISATION ▾ **HISTORY** FAQ RESOURCES ▾ WORKSHOP 1 WORKSHOP 3 WORKSHOP 4 USER SUPPORT

## 🕒 Current Round Submission Status

Submitted or resubmitted dossiers are locked pending review. Select pending dossiers in order to provide requested data.

Round	Reporting Option	Year	Submitted By	Profile	Email	Submission Date	Status	Date	Actions
8th Collection Round	Option 3	2022				2023-05-05	IN_PROGRESS	2023-05-05	⬇️ ✎

🔄 Update

## 🕒 Submission History by Round

Select a dossier to resubmit data. An explanation will be required to support your request.

Round	Reporting Option	Year	Submitted By	Profile	Email	Submission Date	Status	Date	Actions
6th Collection Round	N/A	N/A				2022-07-07	INACTIVE		⬇️ 👁
5th Collection Round	N/A	N/A				2022-07-07	INACTIVE		⬇️ 👁
4th Collection Round	N/A	N/A				2022-07-07	INACTIVE		⬇️ 👁
3rd Collection Round	N/A	N/A				2022-07-07	INACTIVE		⬇️ 👁
2nd Collection Round	N/A	N/A				2022-07-07	INACTIVE		⬇️ 👁

✓ Resubmit



Access all your historical data



# Thank you

---

12, rue de Prony, 75017 Paris, France  
T. +33 (0)1 44 15 19 49  
F. +33 (0)1 42 67 09 87

woah@woah.int  
www.woah.org

[Facebook](#)  
[Twitter](#)  
[Instagram](#)  
[LinkedIn](#)  
[YouTube](#)  
[Flickr](#)



World  
Organisation  
for Animal  
Health  
Founded as OIE

Organisation  
mondiale  
de la santé  
animale  
Fondée en tant qu'OIE

Organización  
Mundial  
de Sanidad  
Animal  
Fundada como OIE

